

# NWS Guam Tropical Cyclone Watches and Warnings & the 2025 Western North Pacific TC Outlook



**Marcus Landon Aydlett**

Warning Coordination Meteorologist  
NWS Weather Forecast Office Guam

August 2025



# TROPICAL STORM MAWAR STRENGTHENING IN FSM; HEADING TO THE MARIANAS

5:30 PM CHST, SUN, 21 MAY 2023

FLASH FLOOD WATCH NOW IN EFFECT FOR GUAM AND THE CNMI

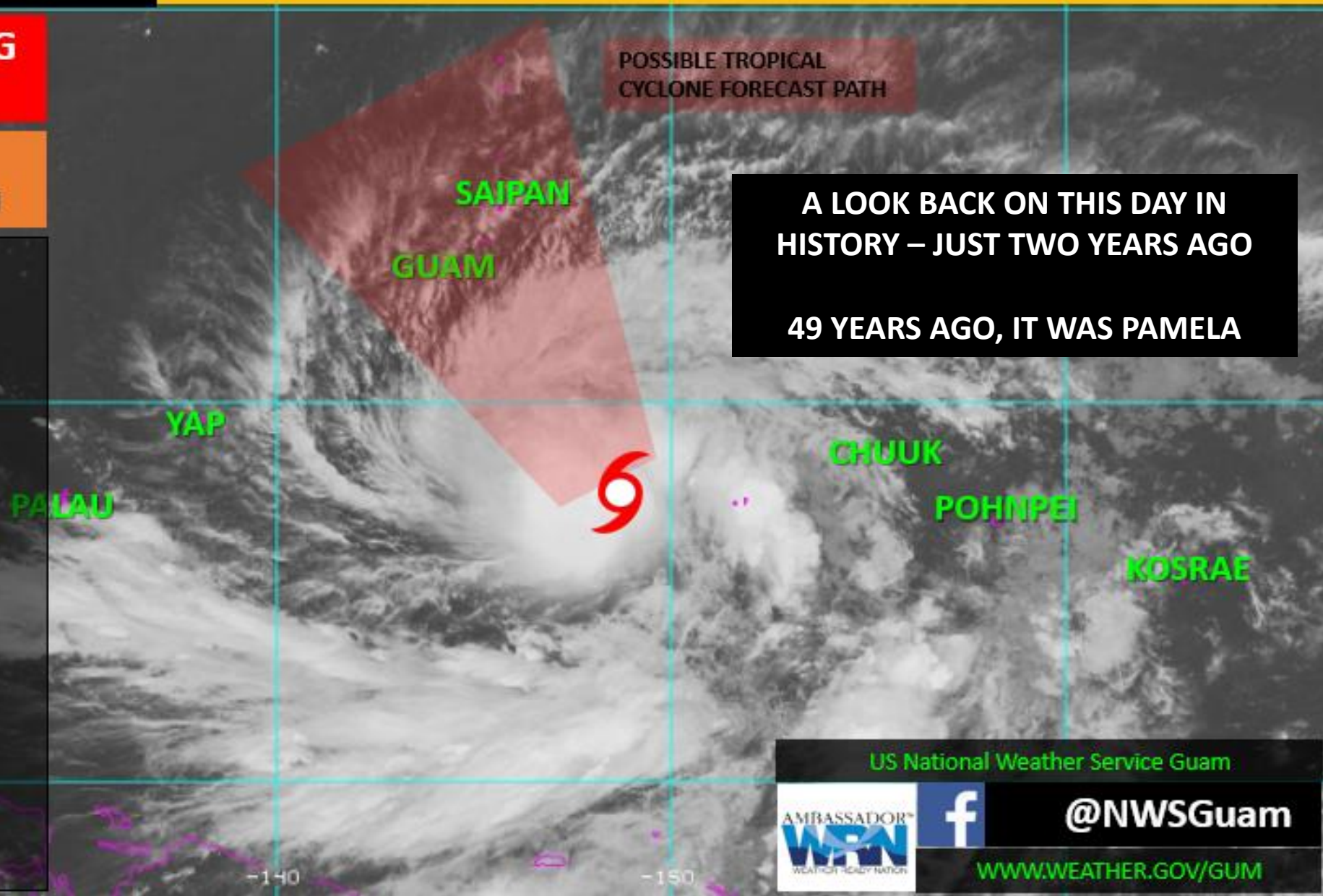
**TROPICAL STORM WARNING**  
ULUL – POLOWAT – SATAWAL

**TYPHOON WATCH**  
GUAM – ROTA – TINIAN – SAIPAN

NWS Public Advisory #5A  
Tropical Storm Mawar (02W)  
500 PM ChST, 21 May 2023

Located: 7.4N 148.1E  
Max Winds: 60 MPH  
Moving: N at 8 mph

70 miles WNW of Polowat  
75 miles E of Satawal  
135 miles SW of Ulul  
255 miles W of Chuuk  
475 miles SSE of Guam  
555 miles SSE of Saipan



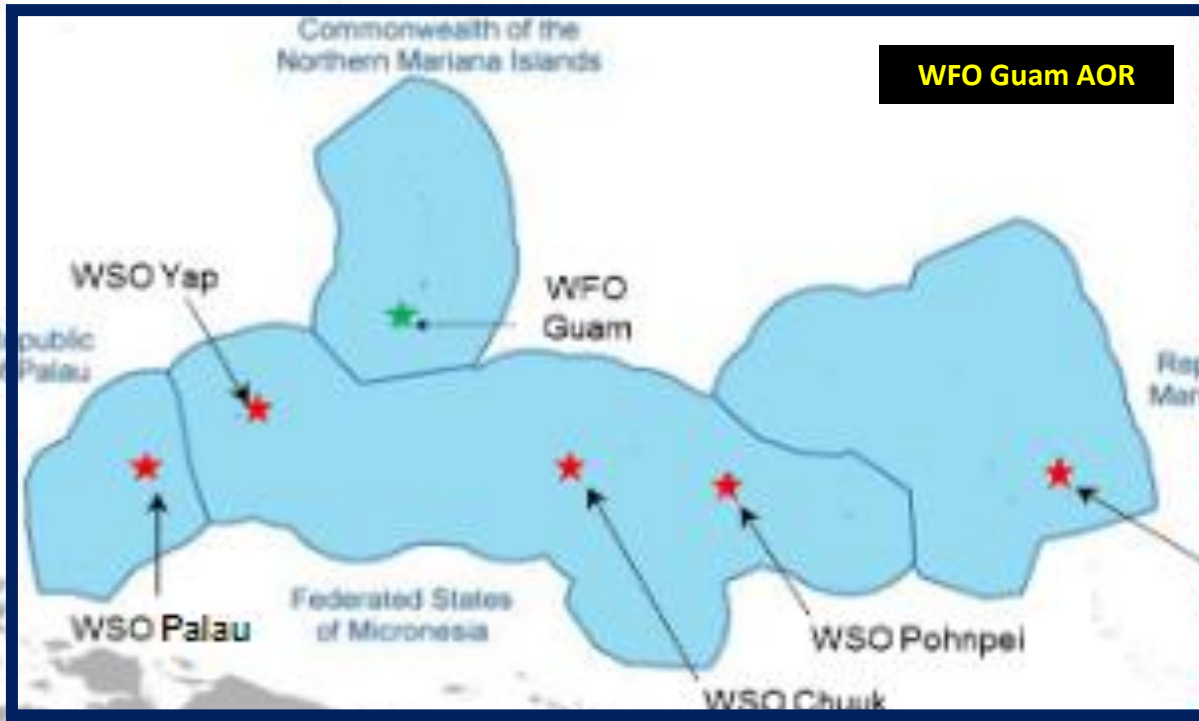
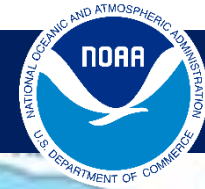
US National Weather Service Guam



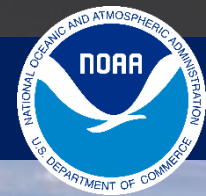
@NWSGuam

[WWW.WEATHER.GOV/GUM](http://WWW.WEATHER.GOV/GUM)

# US National Weather Service: Pacific Region



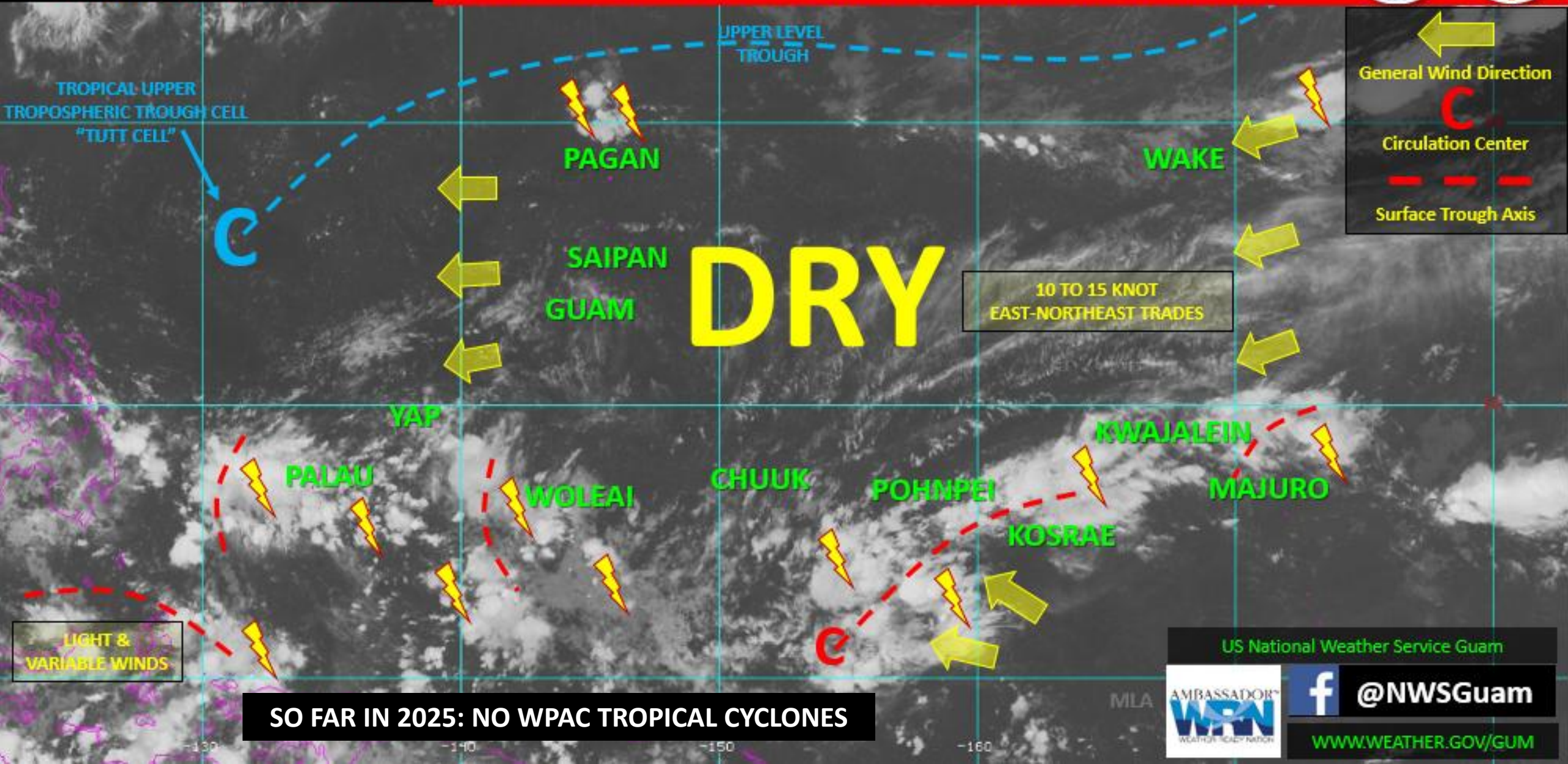
# Where We Are: **Current Weather/Climate Pattern**



# SHOWERY PATTERN PERSISTS IN MICRONESIA; DRY WEATHER PREVAILS OVER MARIANAS

10:00 AM CHST, TUE, 20 MAY 2025

EXTREME DROUGHT: SAIPAN & TINIAN IN THE CNMI; UTIRIK & WOTJE IN THE RMI

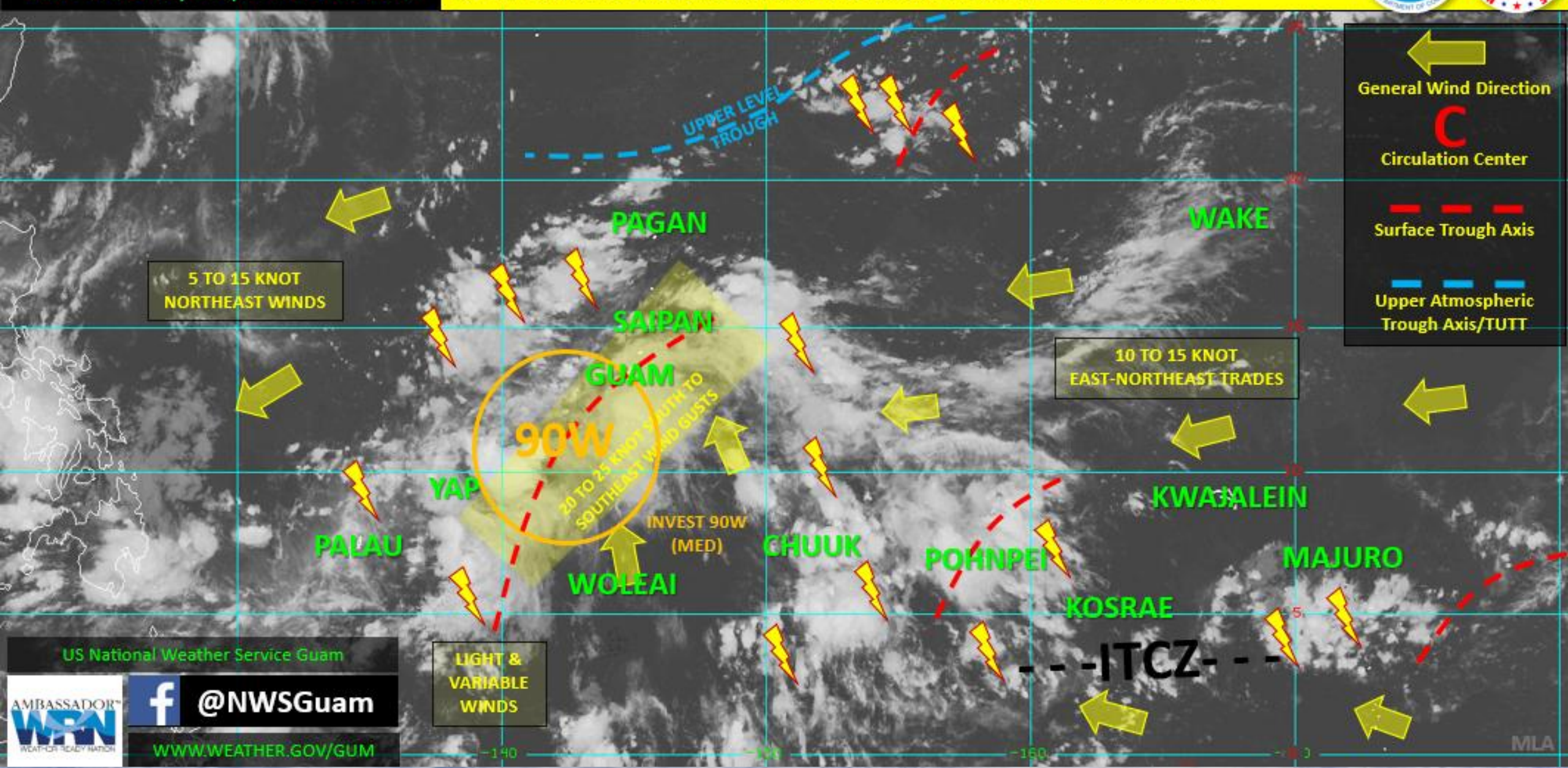


SO FAR IN 2025: NO WPAC TROPICAL CYCLONES

# TROPICAL DISTURBANCE, INVEST 90W, PUSHES WEST; GENERATING SHOWERS/T-STORMS

10:00 AM CHST, TUE, 19 AUGUST 2025

EXPECT AREAS OF STRONG WIND GUSTS NEAR 90W AND THE TROUGH AXIS



US National Weather Service Guam

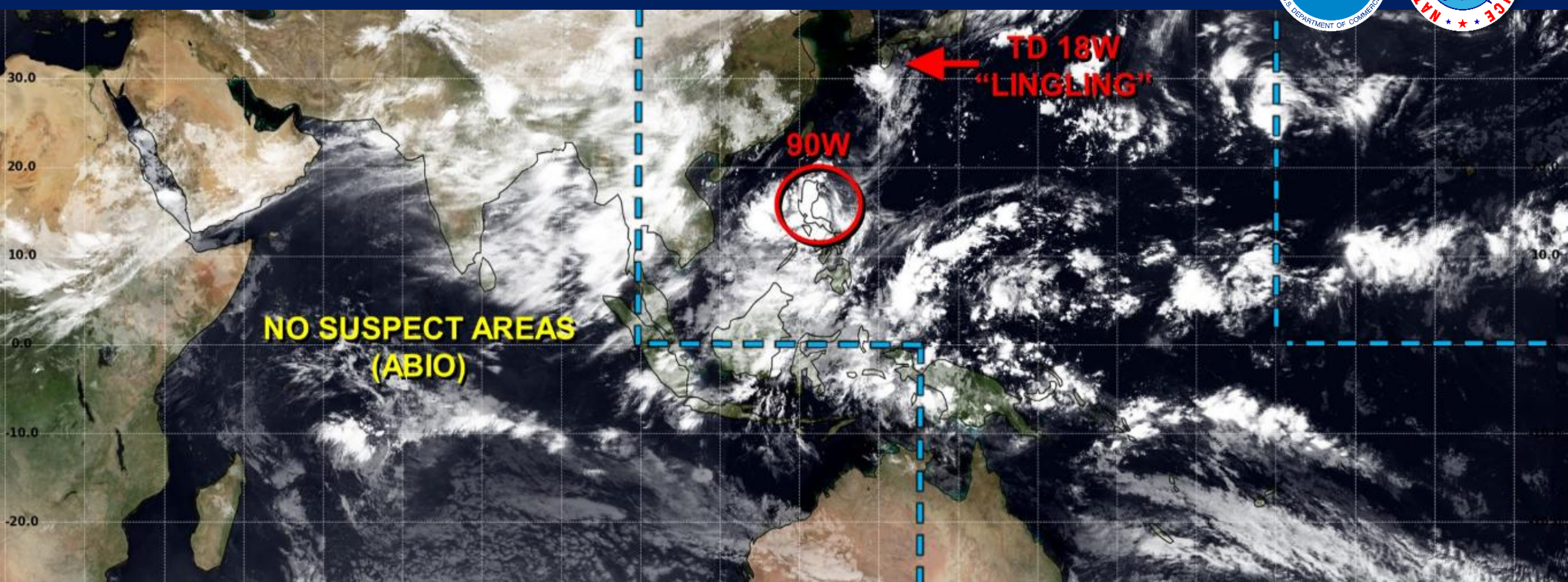


@NWSGuam

WWW.WEATHER.GOV/GUM

LIGHT &  
VARIABLE  
WINDS

MLA



**LOW**

TC development unlikely within 24 hours

**MEDIUM**

TC development likely, but expected to occur beyond 24 hours

**HIGH**

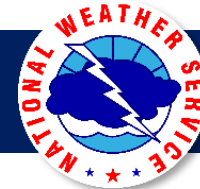
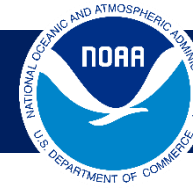
TC development likely within 24 hours  
(Reference TCFA)

**SUB TROPICAL**

Monitoring for potential transition to TC.  
Invest label color denotes tropical transition probability

**Tropical Cyclone (Reference Warning)**

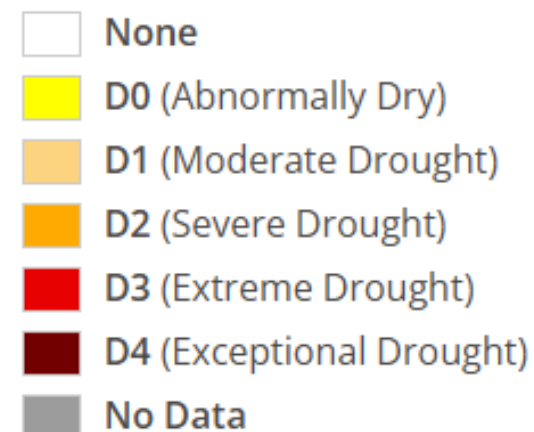
# Where We Are: Regional Drought



Map released: Thurs. August 21, 2025

Data valid: August 19, 2025 at 8 a.m. EDT

## Intensity



## Authors

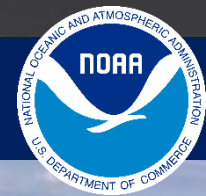
United States and Puerto Rico Author(s):

[Lindsay Johnson](#), National Drought Mitigation Center

Pacific Islands and Virgin Islands Author(s):

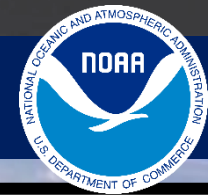
[Tsegaye Tadesse](#), National Drought Mitigation Center

# Where We Are: **Wildfires**



Landon Aydlett, NWS Guam, 10 May 2025

# Climate Prediction Center: ENSO Status/Outlook



FROM: ENSO DIAGNOSTIC DISCUSSION BY THE CLIMATE PREDICTION CENTER/NCEP/NWS ON 14 AUGUST 2025

## ENSO ALERT SYSTEM STATUS: LA NINA WATCH

ENSO-neutral is most likely through the late Northern Hemisphere summer 2025 (56% chance in August-October). Thereafter, a brief period of La Nina conditions is favored in the fall and early winter 2025-2026 before reverting to ENSO-neutral.

For the full discussion: [https://www.cpc.ncep.noaa.gov/products/analysis\\_monitoring/enso\\_advisory/ensodisc.shtml](https://www.cpc.ncep.noaa.gov/products/analysis_monitoring/enso_advisory/ensodisc.shtml)

### SST Anomalies (°C)

06 AUG 2025

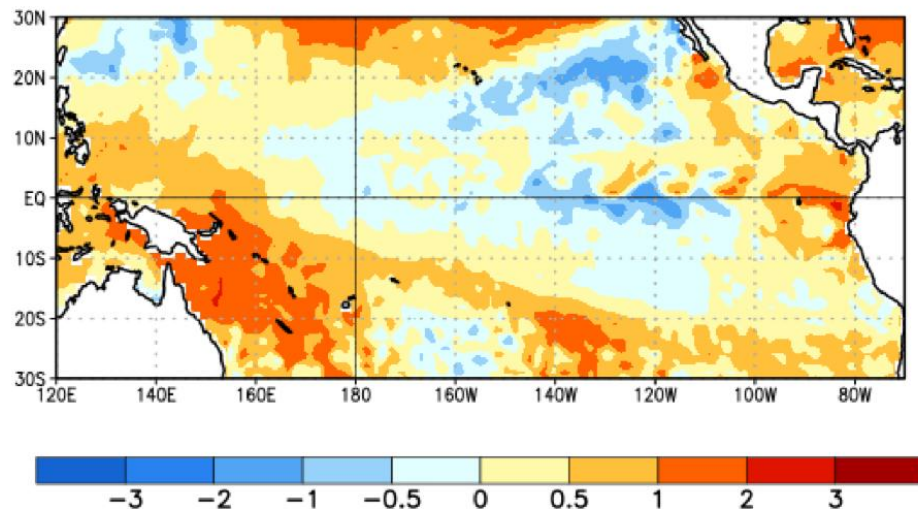


Figure 1. Average sea surface temperature (SST) anomalies (°C) for the week centered on 6 August 2025. Anomalies are computed with respect to the 1991-2020 base period weekly means.

### Official NOAA CPC ENSO Probabilities (issued August 2025)

based on  $-0.5^{\circ}/+0.5^{\circ}\text{C}$  thresholds in ERSSTv5 Niño-3.4 index

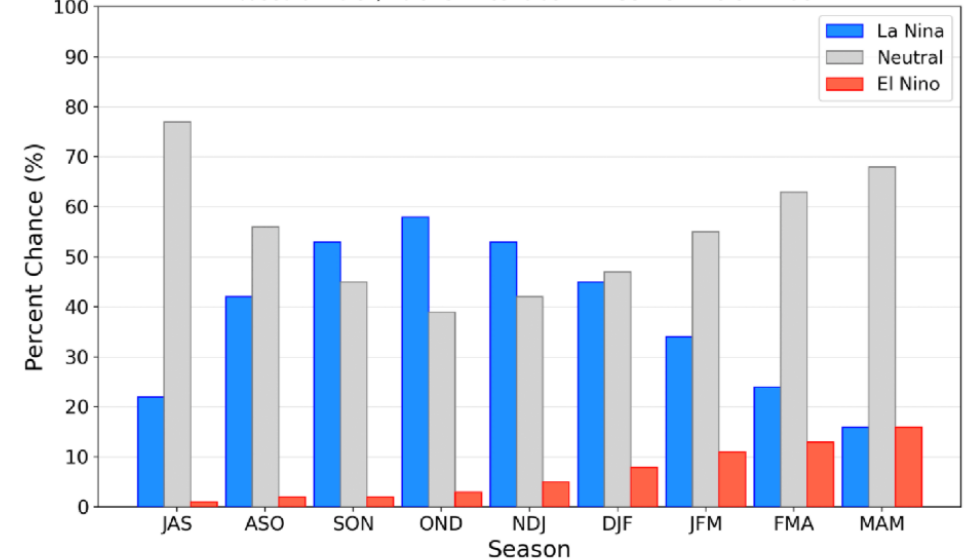
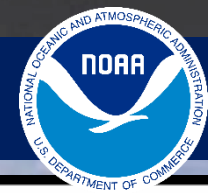
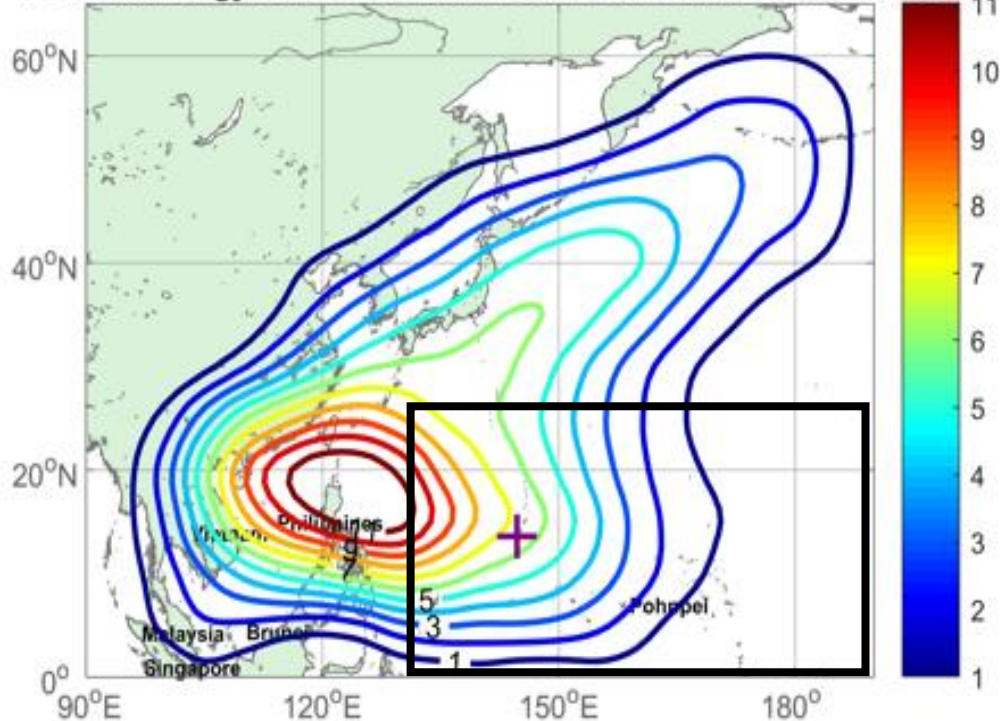


Figure 7. Official ENSO probabilities for the Niño 3.4 sea surface temperature index (5°N-5°S, 120°W-170°W). Figure updated 14 August 2025.

# La Niña vs El Niño: TC Frequencies

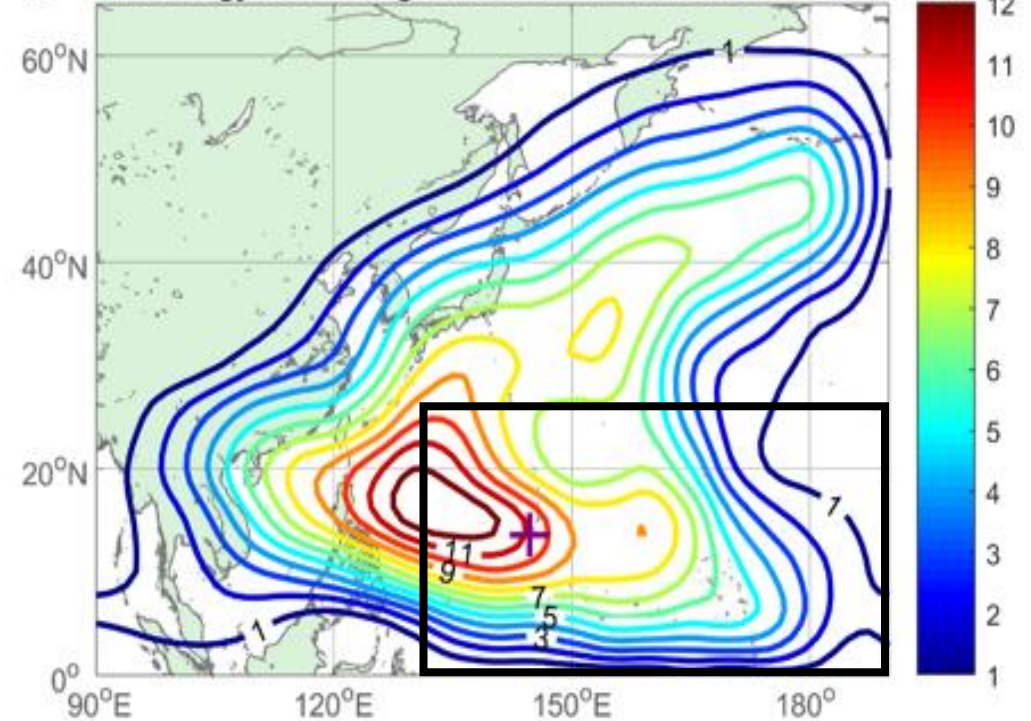


TC Climatology for Weak La Niña Seasons Jun-Dec 1991-2020



IBTrACS Dataset (Knapp et al 2010; Contours 1.0 TCs)  
Purple + Sign is Location of Guam

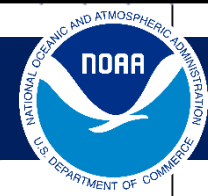
TC Climatology for Strong El Niño Seasons Jun-Dec 1991-2020



IBTrACS Dataset (Knapp et al 2010; Contours 1.0 TCs)  
Purple + Sign is Location of Guam

TC Frequencies Increase across WFO Guam AOR in an El Niño pattern when compared to La Niña; **TC Genesis shifts eastward**

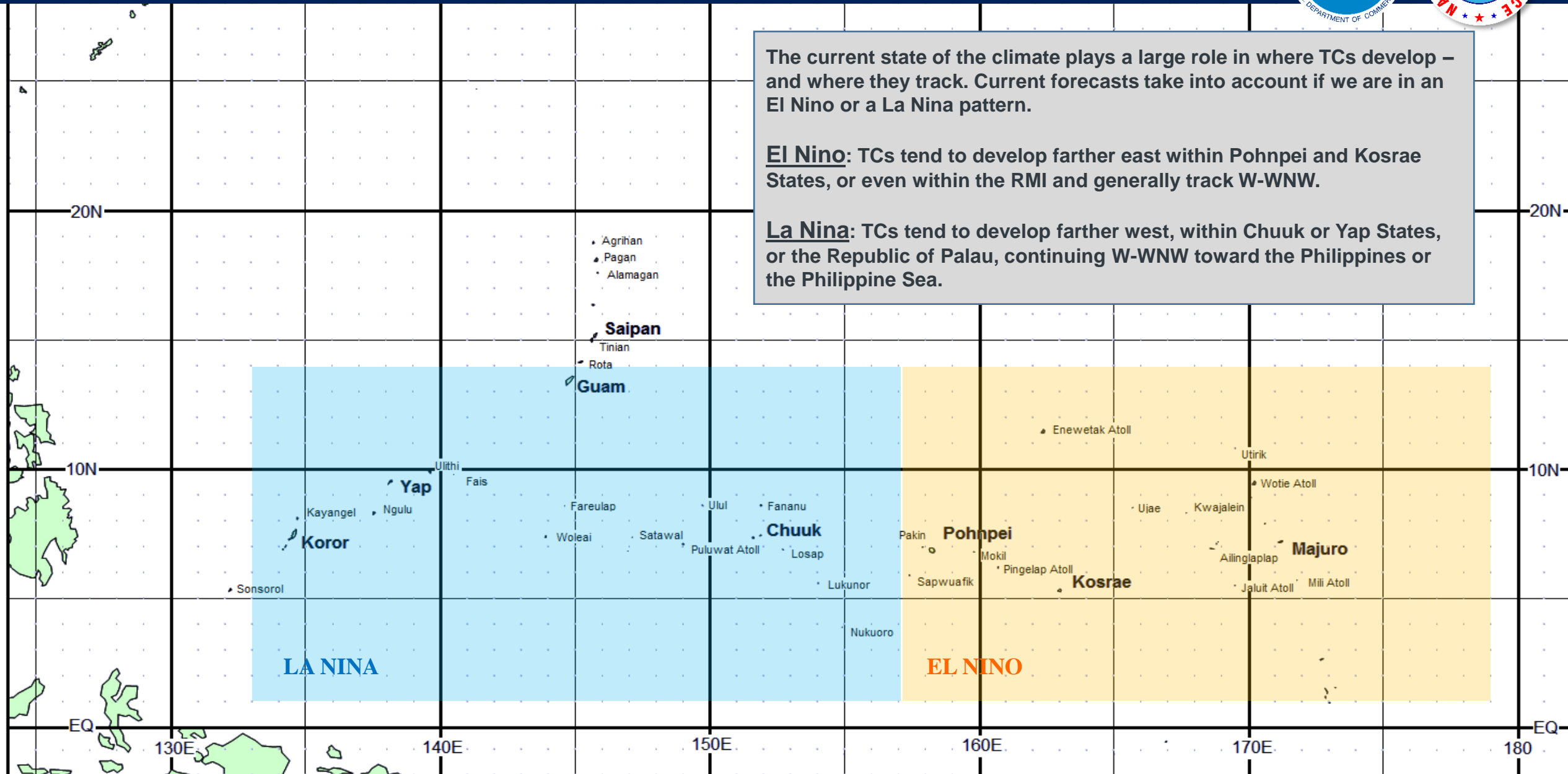
# 2025 Outlook: Current Climate Condition



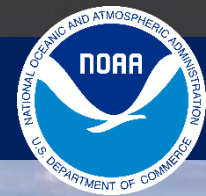
The current state of the climate plays a large role in where TCs develop – and where they track. Current forecasts take into account if we are in an El Nino or a La Nina pattern.

**El Nino:** TCs tend to develop farther east within Pohnpei and Kosrae States, or even within the RMI and generally track W-WNW.

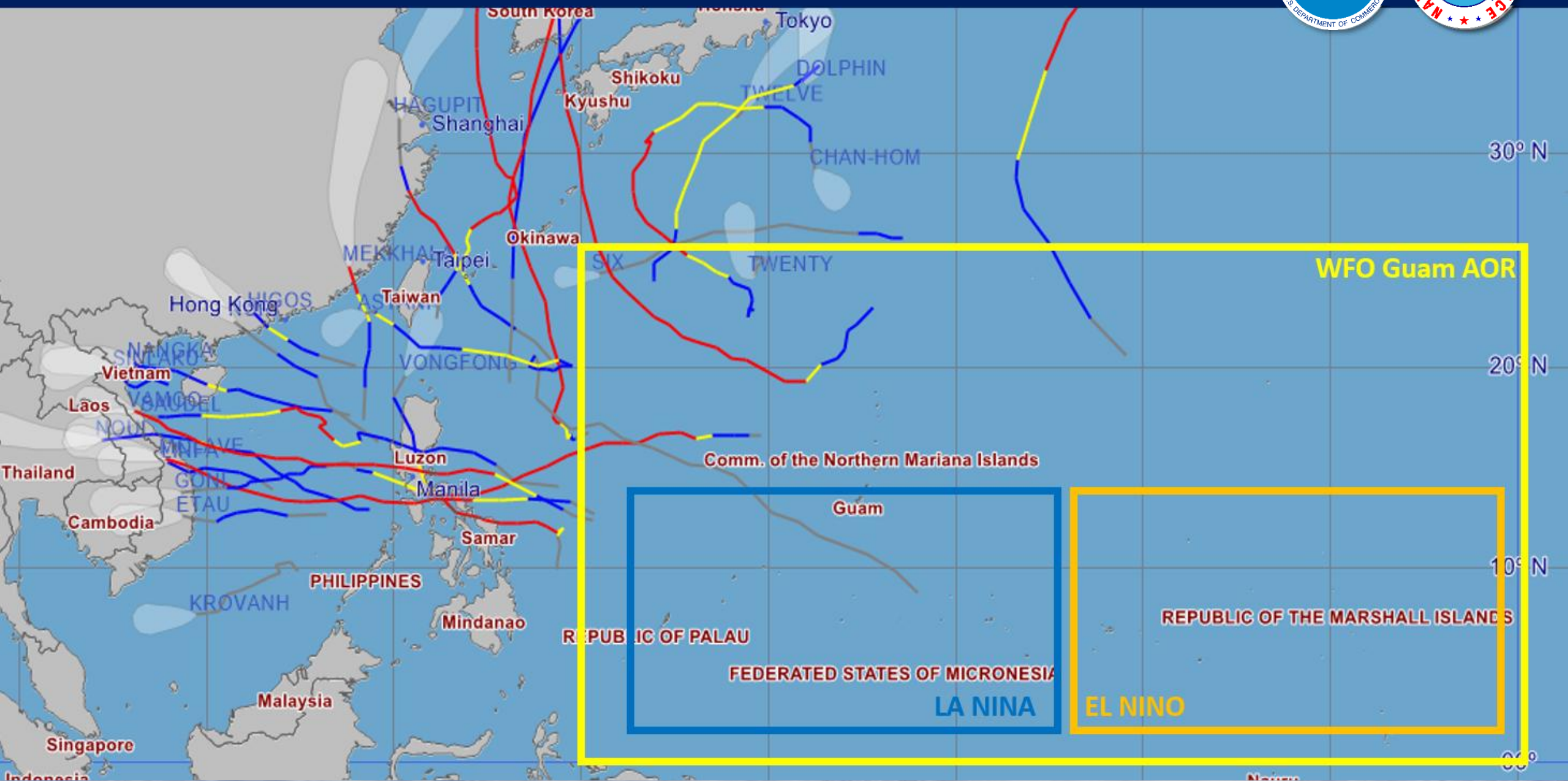
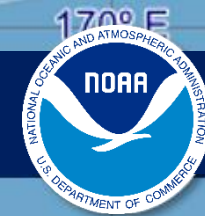
**La Nina:** TCs tend to develop farther west, within Chuuk or Yap States, or the Republic of Palau, continuing W-WNW toward the Philippines or the Philippine Sea.



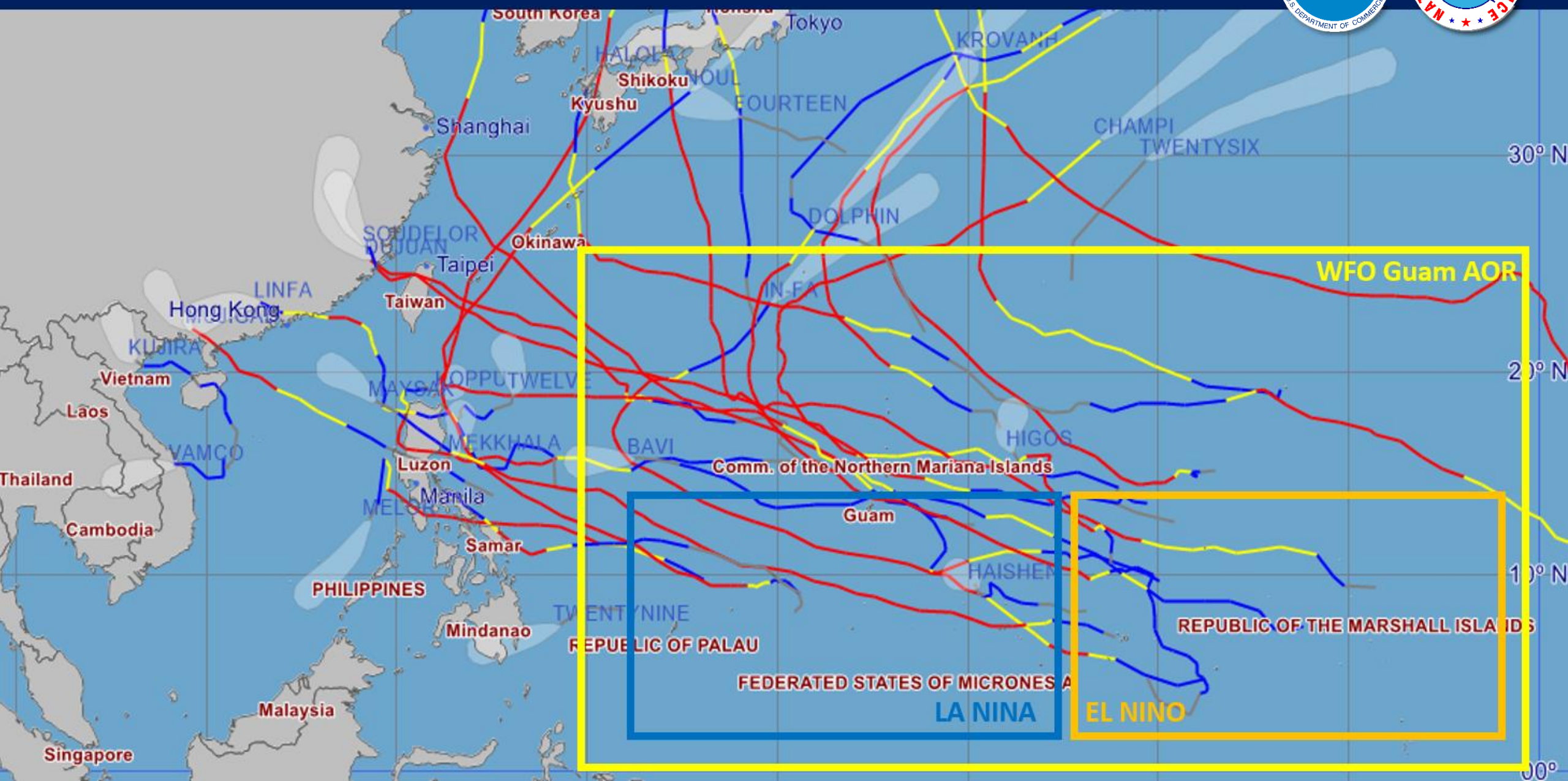
# Where We Were: Recent Years – TCs & ENSO



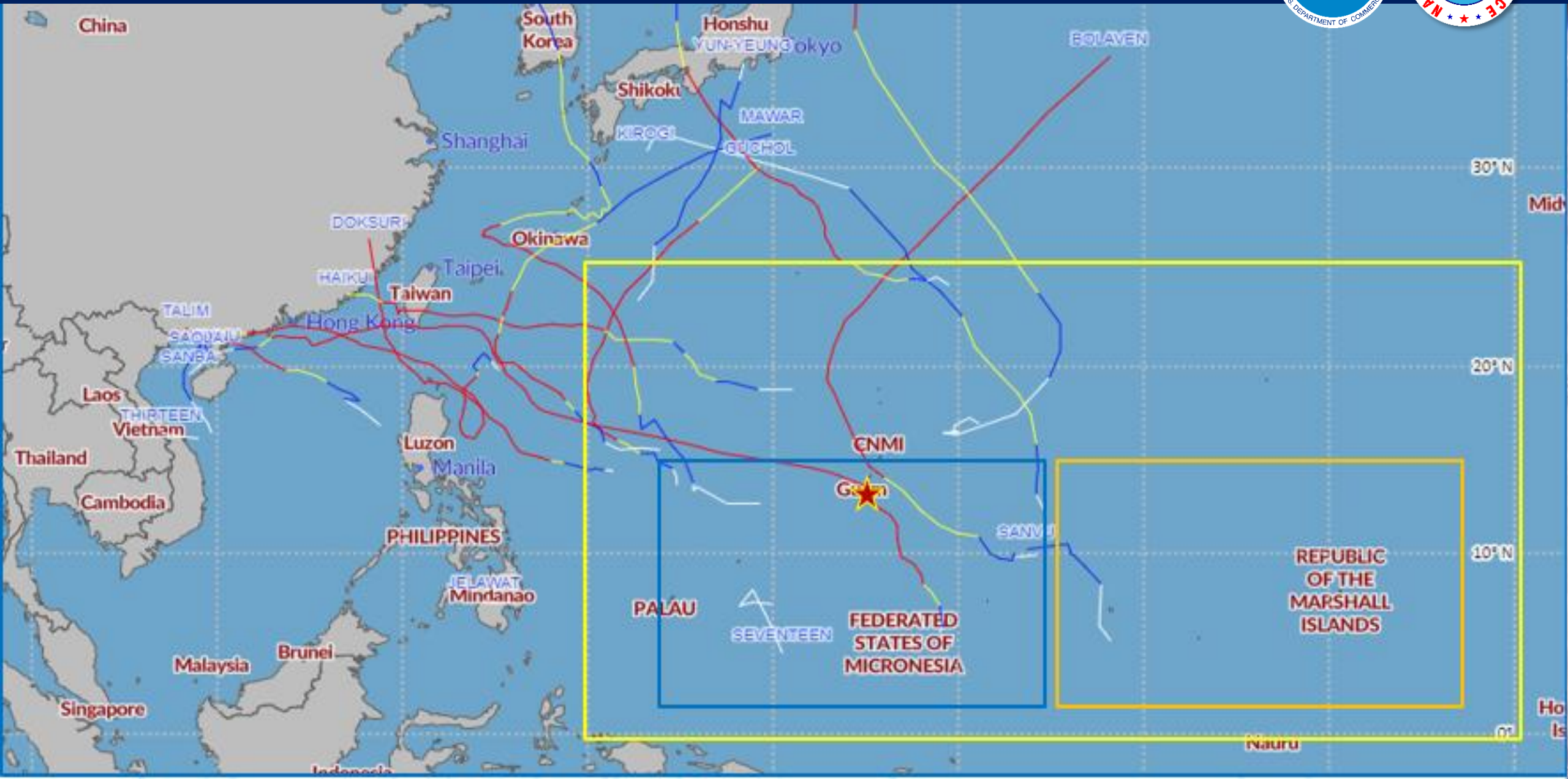
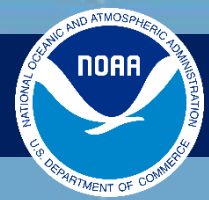
# La Niña vs El Niño: 2020 – La Niña (& 21, 22, 24)



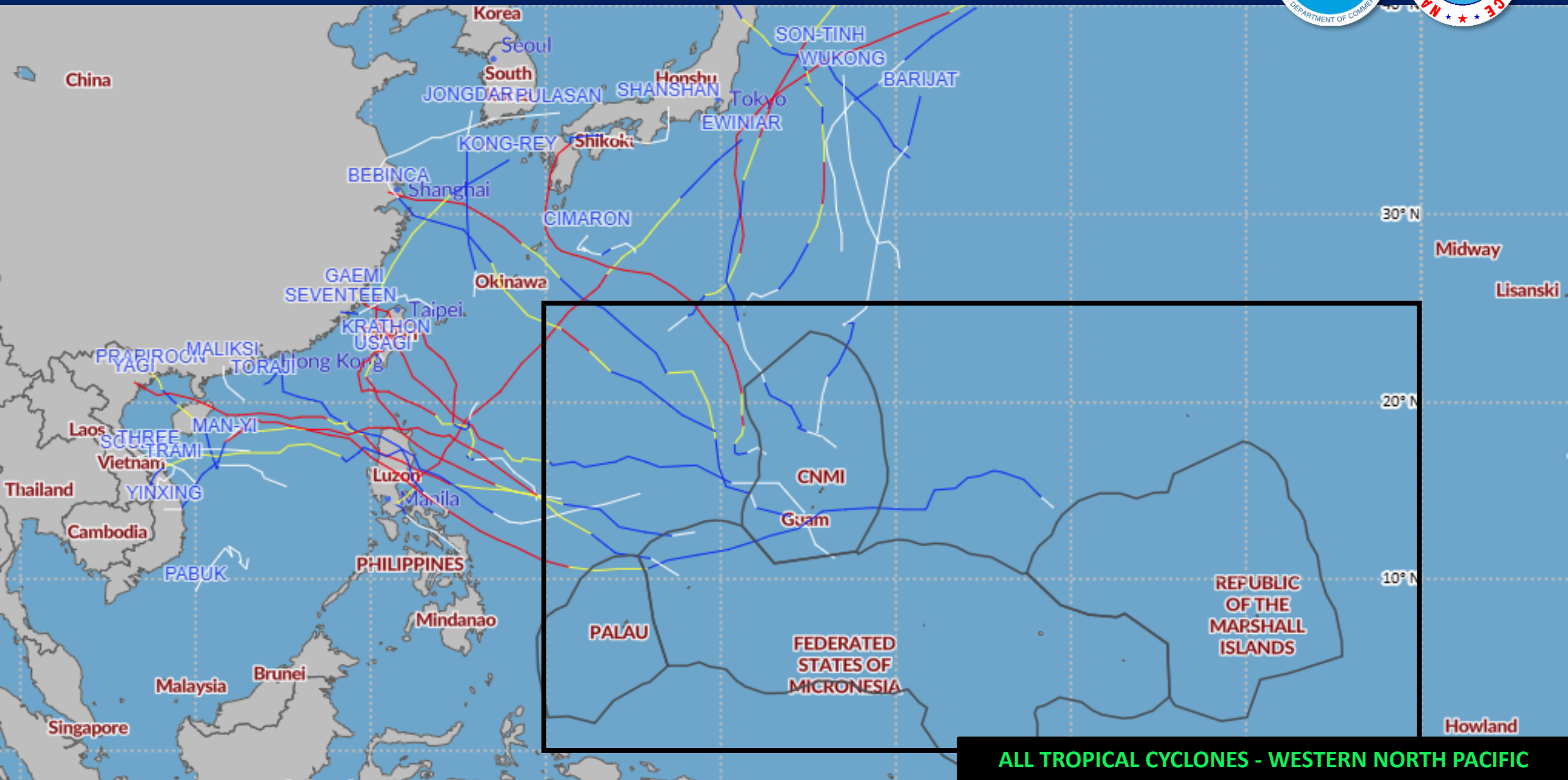
# La Niña vs El Niño: 2015 – El Niño



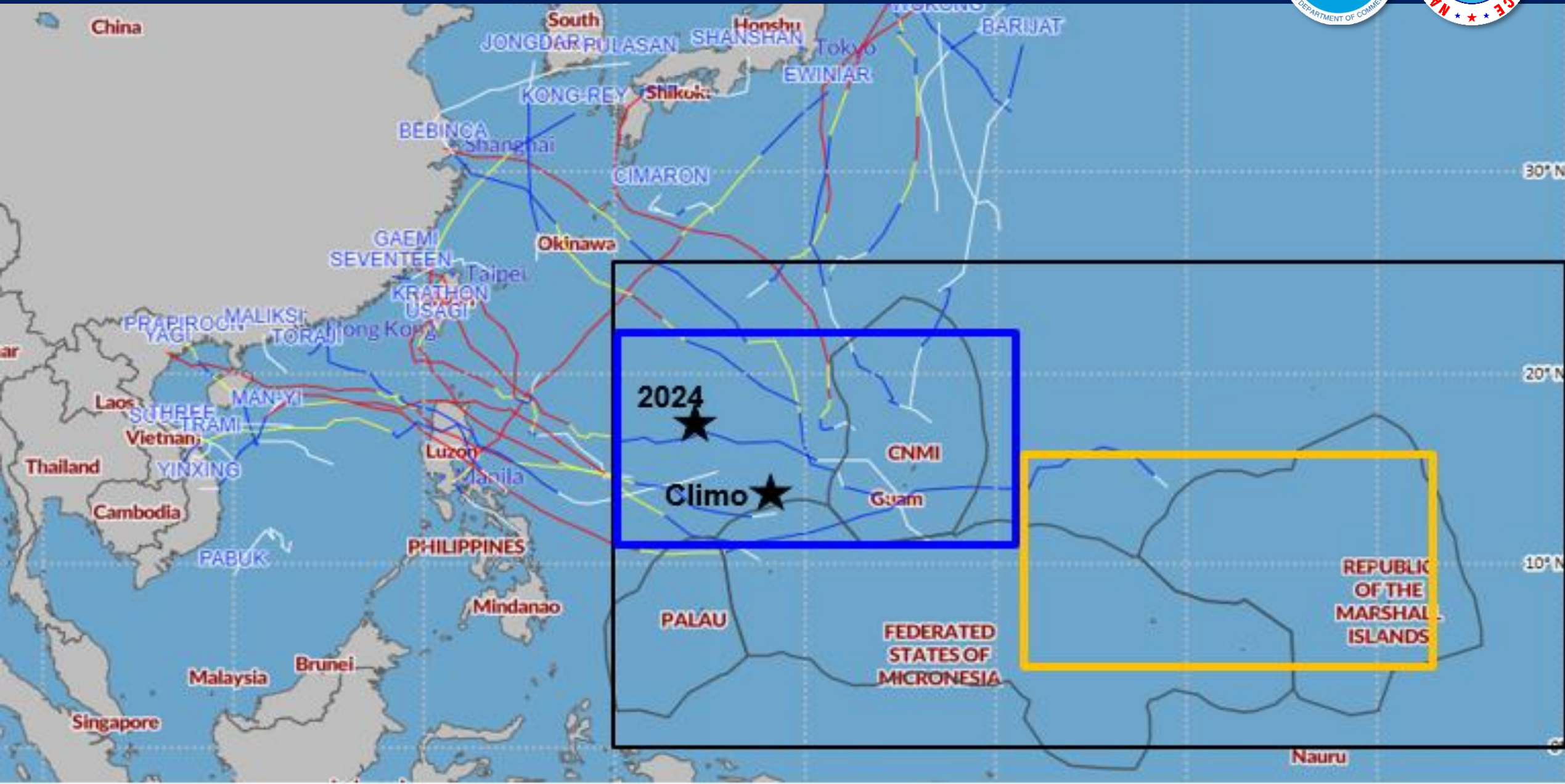
# La Niña vs El Niño: 2023 – El Niño (Kind of?)



# La Niña vs El Niño: 2024 – La Niña? Eventually



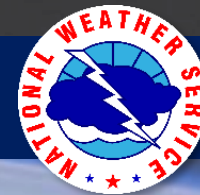
# Average TC Genesis Zone: 2024 vs Climatology



# Where We're Headed: 2025



# 2025 TCs So Far...: 18 TCs – 13 Named TCs (TS-TY)



## Northern Hemisphere Tropical Cyclone Activity for 2025 (2025/2026 for the Southern Hemisphere)

1991-2020 Climatological Activity Through August 21 in Parentheses

Basin	Named Storms	Named Storm Days	Hurricanes	Hurricane Days	Major Hurricanes	Major Hurricane Days	Accumulated Cyclone Energy
<u>North Atlantic</u>	5 (4.8)	16.50 (15.6)	1 (1.4)	6.50 (3.5)	1 (0.4)	3.00 (0.7)	33.9 (20.0)
<u>Northeast Pacific (East of 180°)</u>	11 (8.7)	38.75 (36.4)	6 (4.5)	8.75 (14.1)	3 (2.4)	1.75 (4.5)	49.2 (65.2)
<u>Northwest Pacific (West of 180°)</u>	13 (12.0)	48.00 (54.9)	6 (6.7)	5.50 (22.9)	0 (3.3)	0.00 (8.3)	46.9 (108.5)
<u>North Indian</u>	0 (1.9)	0.00 (6.2)	0 (0.8)	0.00 (1.7)	0 (0.4)	0.00 (0.7)	0 (9.5)
<u>Northern Hemisphere</u>	29 (27.4)	103.25 (113.1)	13 (13.4)	20.75 (42.2)	4 (6.5)	4.75 (14.2)	130 (203.2)
<u>South Indian (West of 135°E)</u>	2 (0.2)	3.50 (0.5)	0 (0.0)	0.00 (0.0)	0 (0.0)	0.00 (0.0)	1.7 (0.3)
<u>South Pacific (East of 135°E)</u>	0 (0.0)	0.00 (0.1)	0 (0.0)	0.00 (0.0)	0 (0.0)	0.00 (0.0)	0 (0.1)
<u>Southern Hemisphere</u>	2 (0.2)	3.50 (0.6)	0 (0.0)	0.00 (0.0)	0 (0.0)	0.00 (0.0)	1.7 (0.4)

Global statistics were last modified: August 21 2025 15:00 MT

Real-time statistics calculated from operational best tracks of NHC, CPHC and JTWC. Southern Hemisphere TC activity resets on July 1.

# 2025 TCs So Far...: 18 TCs – 13 Named TCs (TS-TY)



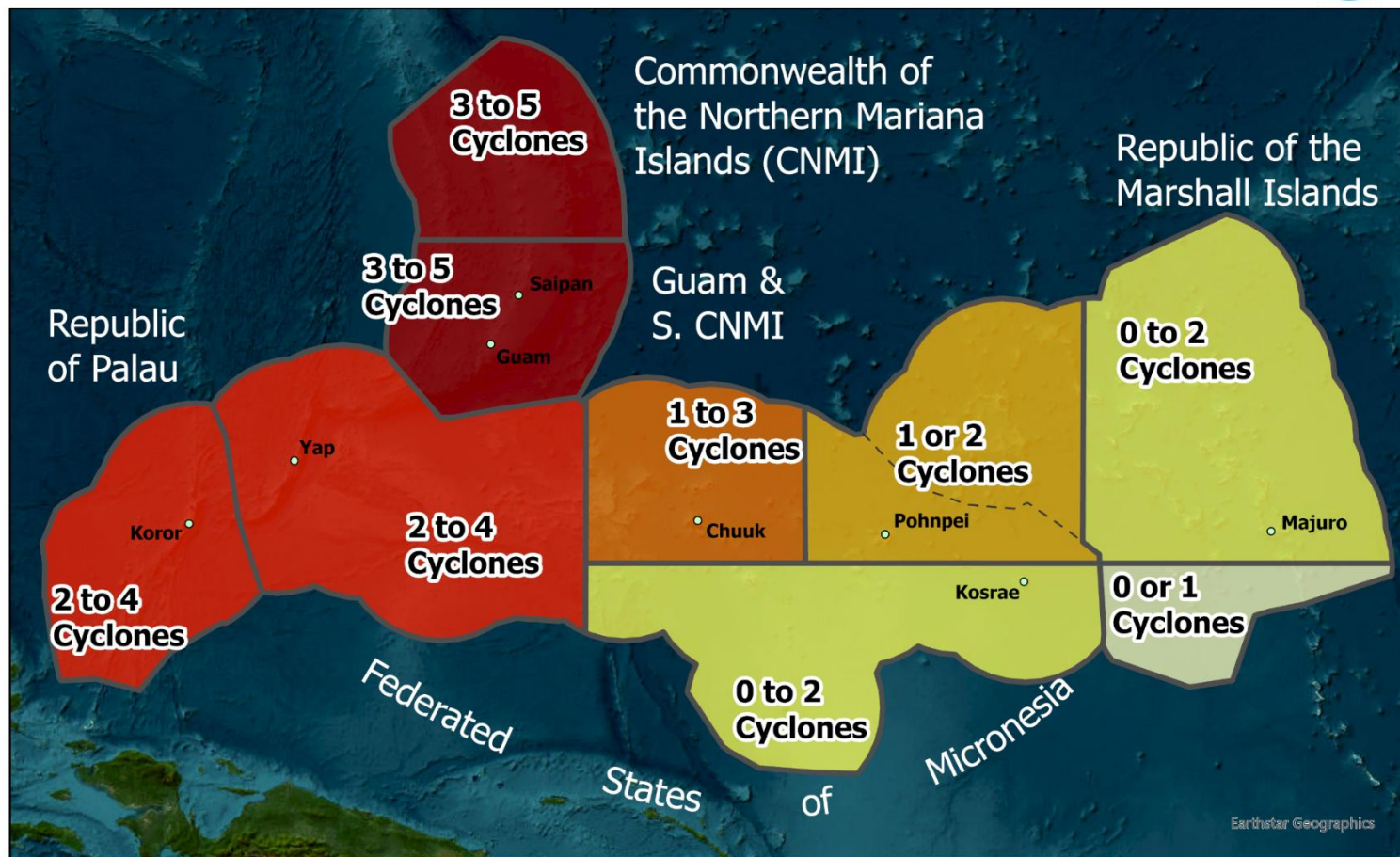
## Real-Time Northwest Pacific Ocean Statistics by Storm for 2025

Year	Storm#	Name	Dates TC Active	Max Wind (kts)	MSLP (mb)	Named Storm Days	Typhoon Days	Cat. 3+ Typhoon Days	Accumulated Cyclone Energy
2025	1	<a href="#">WUTIP</a>	6/11-6/14	65	979	2.75	0.25	0.00	3.2
2025	2	<a href="#">SEPAT</a>	6/23-6/24	40	1000	1.75	0.00	0.00	0.9
2025	3	<a href="#">MUN</a>	7/2-7/7	60	982	5.00	0.00	0.00	5.0
2025	4	<a href="#">DANAS</a>	7/4-7/8	90	958	4.50	1.25	0.00	5.2
2025	5	<a href="#">NARI</a>	7/11-7/14	50	983	3.25	0.00	0.00	2.0
2025	6	<a href="#">EIGHT</a>	7/15-7/15	40	1002	0.50	0.00	0.00	0.3
2025	7	<a href="#">WIPHA</a>	7/18-7/22	65	970	4.25	0.50	0.00	4.2
2025	8	<a href="#">FRANCISCO</a>	7/23-7/25	40	987	2.25	0.00	0.00	1.3
2025	9	<a href="#">CO-MAY</a>	7/23-7/30	70	974	5.00	0.75	0.00	4.3
2025	10	<a href="#">KROSA</a>	7/24-8/4	80	962	10.00	0.75	0.00	10.9
2025	11	<a href="#">BAILU</a>	8/2-8/4	35	997	1.50	0.00	0.00	0.7
2025	12	<a href="#">PODUL</a>	8/7-8/13	90	966	6.25	2.00	0.00	8.5
2025	13	<a href="#">LINGLING</a>	8/20-8/21	45	992	1.00	0.00	0.00	0.7

# 2025 Outlook for the Western North Pacific



## Predicted Number of Tropical Cyclones ( $\geq 39$ mph) in the Western North Pacific

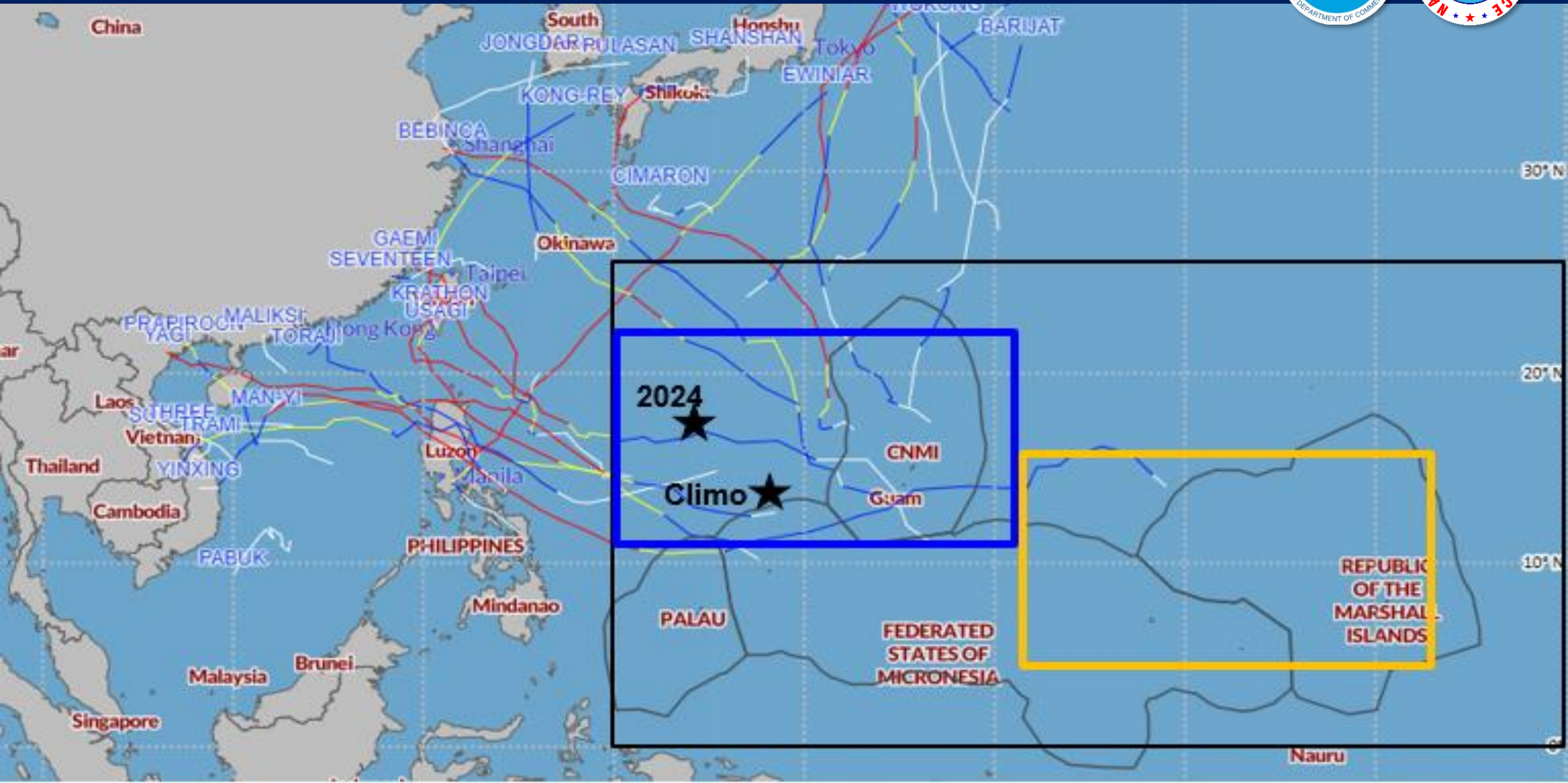


**Below-normal activity for the FSM (Chuuk, Pohnpei, Kosrae) & near-normal activity for Yap**

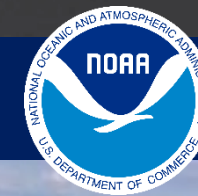
*Predicted number of tropical cyclones of tropical storm ( $\geq 39$  mph sustained winds) and typhoon ( $\geq 74$  mph sustained winds) intensity in the Western North Pacific*

**This Outlook indicates similar activity as was seen in 2024.**

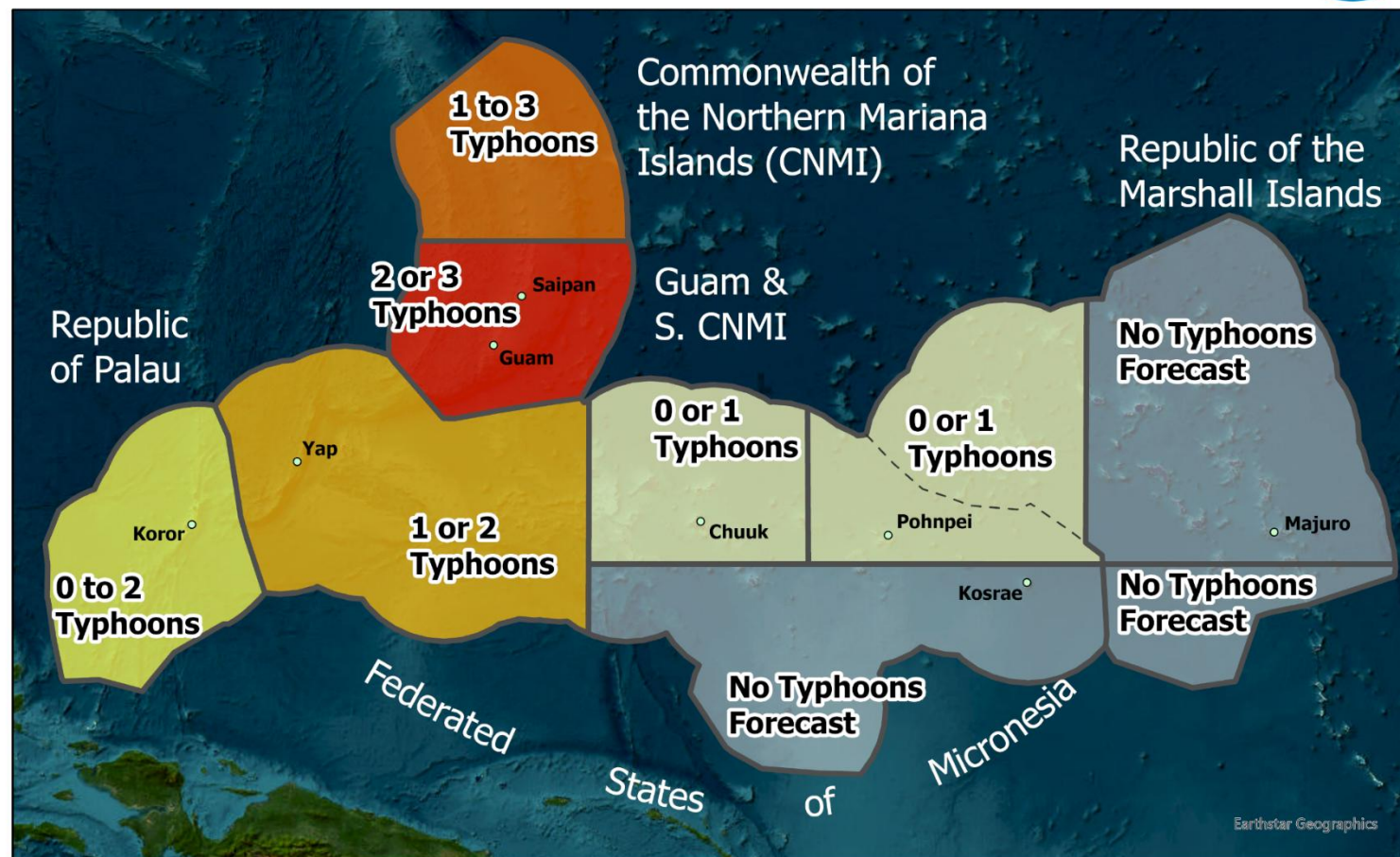
# Average TC Genesis Zone: 2024 vs Climatology



# 2025 Outlook for the Western North Pacific



## Predicted Number of Typhoons ( $\geq 74$ mph) in the Western North Pacific

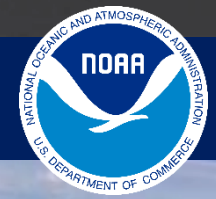


**Below-normal activity for the FSM (Chuuk, Pohnpei, Kosrae) & near-normal activity for Yap**

*Predicted number of typhoons ( $\geq 74$  mph sustained winds) in the Western North Pacific.*

**This Outlook indicates similar activity as was seen in 2024.**

# 2025 Outlook: Key Notes

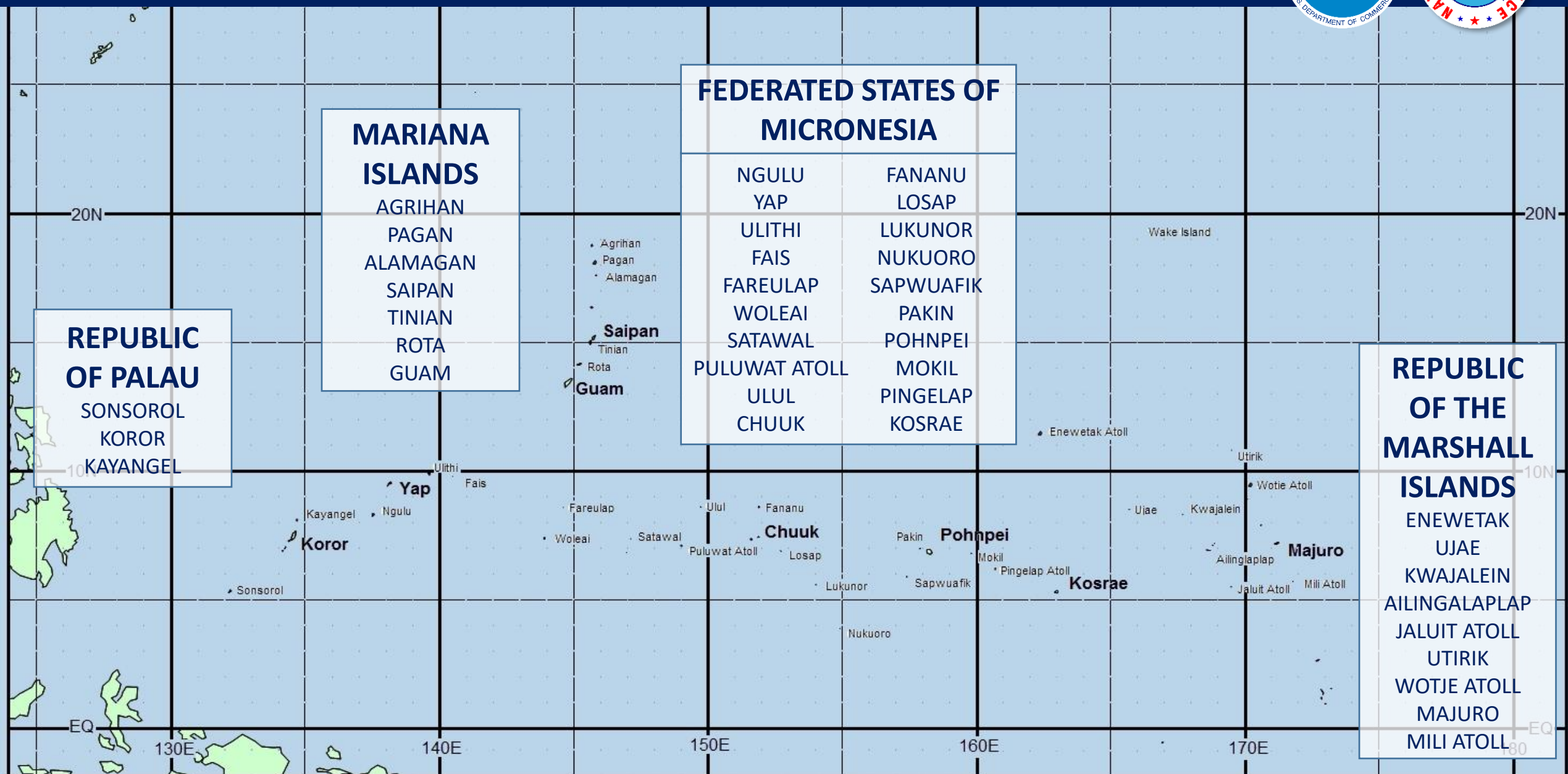


- Near-normal activity is consistent with the ongoing ENSO-Neutral pattern.
- This Outlook indicates similar activity to what we experienced in 2024 (2024 was below to near normal).
- With the shift from a weak La Nina to ENSO-neutral, average TC activity may shift slightly ESE or SE compared to activity in 2024; Average intensity in 2025 could be slightly more than seen in 2024.
- Due to long-range uncertainty, an updated outlook may be provided in August, if needed, to reflect any major changes
- TC activity varies considerably across the region from east to west, and from north to south, with more activity favored for SW and W of the Marianas
- This outlook is a general guide of the predicted overall TC activity across Micronesia; **it is not a prediction of how many systems will actually make landfall**
- While TC activity can fluctuate greatly from year to year, TCs can and do occur anytime throughout the year in the WNP; **TC patterns are typical, but not guaranteed.**
- Residents of the western North Pacific should always maintain weather readiness and be prepared for if, and when, disaster strikes. **Preparedness begins at Home; and it begins with You.**
- Know where to find the most up-to-date weather forecasts and outlooks as well as Watches, Warnings and Advisories: [www.weather.gov/gum](http://www.weather.gov/gum)

# NWS Guam: Watches, Warnings & Communications



# WFO Guam AOR: 39 TC Warning Points



# NWS Tropical Cyclone Watches VS Warnings



Tropical Storm & Typhoon

## WATCHES

Key Word:

**POSSIBLE**

Timing:

**48 Hours**

Tropical Storm & Typhoon

## WARNINGS

Key Word:

**EXPECTED**

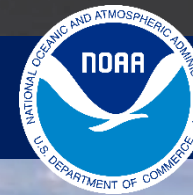
Timing:

**24 Hours**

**BASIS: Onset of Damaging Winds**

**NOT on CPA or passage of the Eye**

# Winds and Tropical Cyclone Watches and Warnings



## Wind Terms

### ➤ **Damaging Winds:**

**Sustained surface winds of 39 mph or more (averaged over a 1-minute period).**

### ➤ **Destructive Winds:**

**Sustained surface winds of 58 mph or more (averaged over a 1-minute period).**

## Watch Timing

### ➤ **Tropical Storm Watch:**

**Damaging winds of 39-73 mph are possible from a TS (or developing TS) generally within 48 hours.**

### ➤ **Typhoon Watch:**

**A TY (or developing TY) poses a possible threat. Damaging winds are possible within 48 hours.**

## Warning Timing

### ➤ **Tropical Storm Warning:**

**Damaging winds are expected within 24 hours or are already occurring.**

### ➤ **Typhoon Warning:**

**TY conditions are expected. Damaging winds are expected to begin within 24 hours or are occurring.**

# Issuing Watches and Warnings



	<b>TS Watch</b>	<b>TY Watch</b>	<b>TS Warning</b>	<b>TY Warning</b>	<i>TS Warning WITH TY Watch</i>
<b>Meaning</b>	39-73 mph (Damaging) winds <b><u>possible</u></b>	74+ mph (typhoon force) winds <b><u>possible</u></b>	39-73 mph winds <b><u>expected</u></b>	74+ mph winds <b><u>expected</u></b>	A TY will pass by within 24hrs; however, TY winds are <b><u>possible</u></b> , but not <b><u>expected</u></b> .
<b>Timing</b>	Within 48hrs	Within 48hrs*	<b>Within 24hrs</b>	<b>Within 24hrs*</b>	

All TY Watch / Warning timing is based on the **onset** of damaging winds of 39 mph

# NWS Tropical Cyclone Text Products



## JTWC WARNINGS

Routine Tropical Cyclone  
Warning Text and Graphic

Uses UTC/Zulu Time  
Wind Speed in Knots  
Distance in Nautical Miles  
Provides Forecast CPAs to  
selected islands and forecast  
points

Issuance begins with formation  
of a Tropical Depression



## PUBLIC ADVISORIES

Primary NWS Product to  
disseminate TC information

Used to issue/cancel all TC  
Watches and Warnings  
(WaWas)

Provides TC location, distance in  
miles, movement in mph, and  
intensity in mph, using ChST

Gives a general forecast for  
direction/motion and intensity

Intermediates issued when  
WaWas are issued, Specials  
issued as needed for significant  
changes, new WaWas



## LOCAL STATEMENTS

Provides detailed, localized  
information for locations under  
WaWa on expected magnitude  
and timing of TCs threat

Recaps all WaWas in effect and  
current TC information

Provides evacuation,  
preparedness, precautionary  
actions from EMs

For Islands under a WaWa:  
Information includes Wind  
(onset, intensity), Rain  
Expectations, Marine/Surf  
Details

## TC UPDATES

Issued hourly when TC center is  
within radar range (approx. 230  
miles from Guam)

Updates TC center location and  
movement, confidence based  
on radar imagery, and  
distance/bearing from Hagatna  
or an island of the CNMI

Updated positions are used in  
subsequent Public Advisories  
and Local Statements

### ISSUANCE TIME

Every 6 hours  
**1 & 7 am/pm (ChST)**

### ISSUANCE TIME

Scheduled: Every 6 hours  
**2 & 8 am/pm (ChST)**  
Intermediate: Every 6 hours  
(Watch/Warning in Effect)  
**5 & 11 am/pm (ChST)**

### ISSUANCE TIME

Every 6 hours  
**3 & 9 am/pm (ChST)**

### ISSUANCE TIME


**Hourly**  
**When in Range of Radar**

# Communications: Regional Weather Outlooks



## Weekly Regional Weather Outlook

- Produced weekly on Tuesdays
- Includes general weather forecast and discussion for all of the NWS Guam AOR (Guam, CNMI, ROP, FSM, RMI)
- Brings early communications and awareness to any emerging significant weather features
- Enables and fosters further communications and decision support services with regional decision makers and emergency managers
- RWO includes a brief discussion on any TCs, possibilities and/or hazards; and regional drought
- Also includes the 2 and 3-week long range outlook from the Climate Prediction Center; and the weekly analysis from the US Drought Monitor
- JTWC information included for active TCs



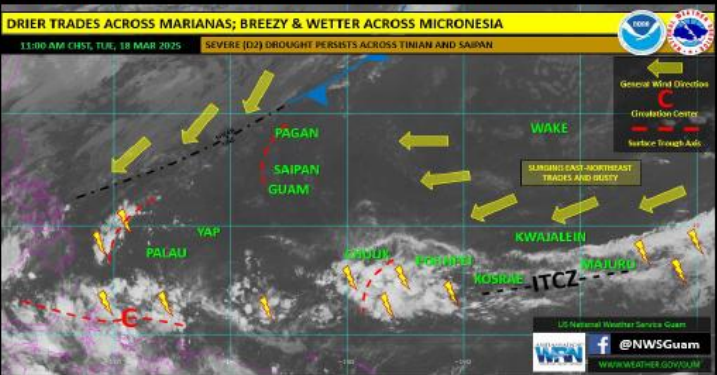
**National Weather Service**  
Weather Forecast Office Guam  
nws.gum.operations@noaa.gov  
671-472-0900  
www.weather.gov/gum

### Weekly Regional Weather Outlook

Tuesday, March 18, 2025, Valid at 11:00 AM ChST Prepared by: Landon Aydtlett, WCM

**REGIONAL OVERVIEW:** A seasonably dry pattern remains in place across the Marianas and areas north of 8N from 130E to the Date Line. Showers and thunderstorms are found elsewhere across the region south of 8N, with gusty trade winds east of 150E.

A dry trade wind pattern will remain in place across **Guam and the CNMI** through the weekend. Expect only spotty light showers and moderate trades. Seas and surf will build mid to late week as a northeast trade wind swell and a northwest swell both build across the Marianas. The ongoing dry pattern will allow the high fire danger to increase across the Marianas. A surface trough west of **Palau and Yap** now along 130E brought much-needed rainfall to Yap late Sunday and Monday. Drier weather is in place at both locations today while more showers and thunderstorms are near and south of 5N. Expect generally fair weather through the end of the week at both locations, but with a few more showers near Palau. A surface trough could bring more showers to the region early next week. For **Chuuk, Pohnpei, Kosrae and Majuro**, winds, seas, surf and chop will all be elevated the next few days as trade winds surge across the region and the ITCZ keeps active, generating showers and thunderstorms south of 8N. Conditions will ease by the weekend as winds subside a bit. Small Craft and High Surf Advisories are in effect for some locations across the region. For locations not covered by an active advisory, seas and surf will be elevated with choppy conditions this week.



**TC POTENTIAL/HAZARDS:** None.

**DROUGHT OUTLOOK:** Severe (D2) drought continues across Saipan and Tinian, while moderate (D1) drought persists across Yap and the northern RMI. A surface trough brought much-needed showers to Yap Proper late Sunday and Monday, allowing for some short-term drought relief. In the longer range, expect near-normal rainfall across much of the region, with above-normal rainfall for Palau, and below-normal rainfall across the northern RMI and near the Equator, east of 150E. The NWS Guam Drought Information Statement will be updated this Friday, March 21, 2025.


**REGIONAL WEATHER FORECASTS:**

<a href="#">Mariana Islands</a>	<a href="#">Palau/Yap/Chuuk Coastal</a>	<a href="#">Area Forecast Discussion</a>
<a href="#">Mariana Coastal Waters</a>	<a href="#">Pohnpei/Kosrae/Majuro Coastal</a>	<a href="#">Tropical Weather Discussion</a>
<a href="#">Marianas Surf Zone</a>		

**WARNINGS/WATCHES/ADVISORIES:**

<a href="#">High Surf Advisory: Kosrae</a>	<a href="#">Small Craft Advisory: Pohnpei, Majuro</a>
--	---

This Regional Weather Outlook for the WFO Guam Area of Responsibility in the western North Pacific from the Equator to 25N from 130E to the Date Line is issued weekly on Tuesdays. Information is prepared as an additional Decision Support Service for regional Weather Offices and Core Partners & complements routine WFO Guam Forecasts found at [www.weather.gov/gum](http://www.weather.gov/gum)



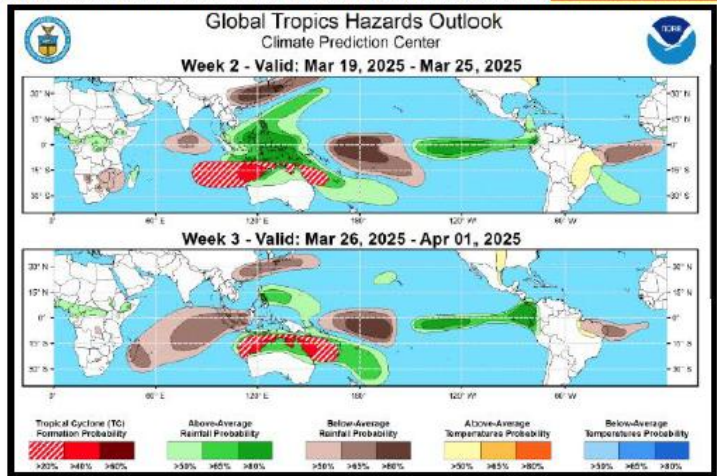
**National Weather Service**  
Weather Forecast Office Guam  
nws.gum.operations@noaa.gov  
671-472-0900  
www.weather.gov/gum

**SUPPLEMENTAL:**

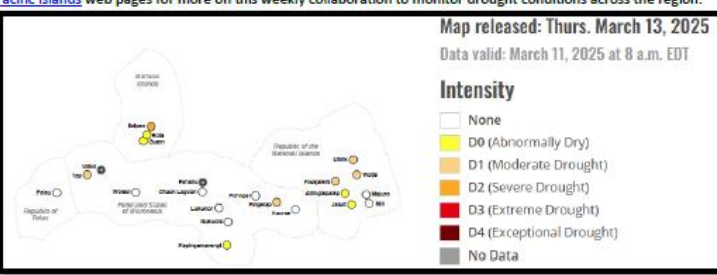
1. [Joint Typhoon Warning Center Home Page Graphic:](#)

NO ACTIVE TROPICAL CYCLONES OR SUSPECT AREAS IN THE WESTERN NORTH PACIFIC

2. **Weeks 2-3 Global Tropics Hazards Outlook (GTH), provided by the Climate Prediction Center:** This Outlook aims to provide 2-3 weeks guidance on potential TC formation, probabilities for above- and below-normal rainfall, and temperatures. Graphics updated late Tuesday night (Guam)/Tuesday morning (Eastern). **Last Issued: 4 March 2025**



3. **U.S. Drought Monitor for the U.S. Affiliated Pacific Islands:** Visit the [U.S. Drought Monitor](#) and the [U.S. Affiliated Pacific Islands](#) web pages for more on this weekly collaboration to monitor drought conditions across the region.



Map released: Thurs. March 13, 2025  
Data valid: March 11, 2025 at 8 a.m. EDT

**Intensity**

None
D0 (Abnormally Dry)
D1 (Moderate Drought)
D2 (Severe Drought)
D3 (Extreme Drought)
D4 (Exceptional Drought)
No Data

This Regional Weather Outlook for the WFO Guam Area of Responsibility in the western North Pacific from the Equator to 25N from 130E to the Date Line is issued weekly on Tuesdays. Information is prepared as an additional Decision Support Service for regional Weather Offices and Core Partners & complements routine WFO Guam Forecasts found at [www.weather.gov/gum](http://www.weather.gov/gum)

# Communications: Regional Weather Alerts



## Daily Weather Alert

- Produced DAILY to communicate any significant weather threat in the region (typically TC-related)
- Weather Alert is focused on that primary weather threat and any islands being affected or expected to be
- Aims to complement the full suite text bulletins with the NWS TC apparatus
- Hyperlinks will take users to the FULL TEXT BULLETINS for the detailed information
- Written using PLAIN LANGUAGE for easy consumption, sharing and deciphering, to include EMs, Media and general public
- Will include info-graphic and/or JTWC and/or NWS Guam Forecast Track graphics
- IF you do not receive these emails from me, or someone within your organization, and would like to, send an email to me with your name, agency/office and role, to [Marcus.Aydlett@noaa.gov](mailto:Marcus.Aydlett@noaa.gov)



### WEATHER ALERT: Typhoon Mawar Strengthening

#### Typhoon Warnings in Effect; Mawar Maintains Course Toward Marianas

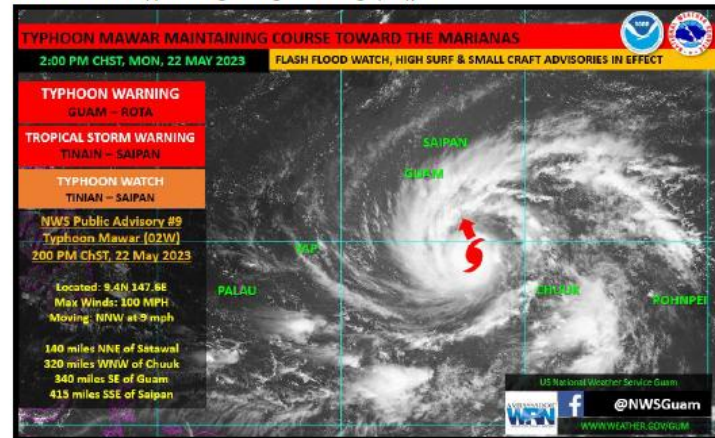
Monday, May 22, 2023, Valid at 2:00 PM ChST

Prepared by: Landon Aydlett, WCM

**TC POTENTIAL/HAZARDS:** Typhoon Mawar (02W) continues to strengthen this afternoon on its approach toward the Mariana Islands. All Tropical Storm Warnings have been canceled for islands within the Federated States of Micronesia. However, a Typhoon Warning is now in effect for Guam and Rota, and a Tropical Storm Warning is now in effect for Tinian and Saipan. The Typhoon Watch for Tinian and Saipan remains in effect.

- A **Typhoon Warning** means that damaging winds of 39 mph or more are expected within 24 hours, becoming typhoon force.
- A **Tropical Storm Warning** means that damaging winds of 39 mph are expected within 24 hours.
- A **Typhoon Watch** means that typhoon force winds of 74 mph or more are possible if Mawar shifts northward.

At 1:00 PM ChST, TY Mawar was located 340 miles southeast of Guam and 415 miles south-southeast of Saipan near 9.4N 147.6E moving north-northwestward at 9 mph, with maximum sustained winds now up to 100 mph. Mawar is now a Category-2 typhoon. Mawar is expected to maintain a general north-northwestward motion through Tuesday, then make a gradual turn toward the northwest. As currently forecast, Mawar will pass through the Rota Channel, or over parts of Guam, around mid-day Wednesday. Mawar is expected to strengthen further as it approaches the Marianas and will likely pass through the region as a Category-3 typhoon.



Folks within the Marianas, particularly on Guam and Rota, should take this system seriously, as conditions regarding this typhoon evolve in the next 12 to 24 hours and certainty increases. For all the latest Public Advisories, Local Statements for threatened islands and Forecast Tracks and Charts on Tropical Storm Mawar, please visit our [Tropical Cyclones Page](#).

This Regional Weather Outlook for the WFO Guam Area of Responsibility in the western North Pacific from the Equator to 25N from 130E to the Date Line is issued weekly on Tuesdays by 12:00 PM ChST. Information is prepared as an additional Decision Support Service for regional Weather Offices and Core Partners & complements routine WFO Guam Forecasts found at [www.weather.gov/gum](http://www.weather.gov/gum)



#### REGIONAL WEATHER FORECASTS:

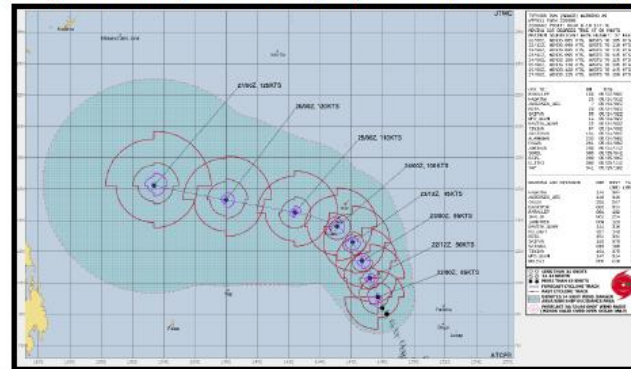
[Mariana Islands](#) [Palau/Yap/Chuuk Coastal](#) [Area Forecast Discussion](#)  
[Mariana Coastal Waters](#) [Pohnpei/Kosrae/Majuro Coastal](#) [Tropical Weather Discussion](#)  
[Marianas Surf Zone](#)

#### WARNINGS/WATCHES/ADVISORIES:

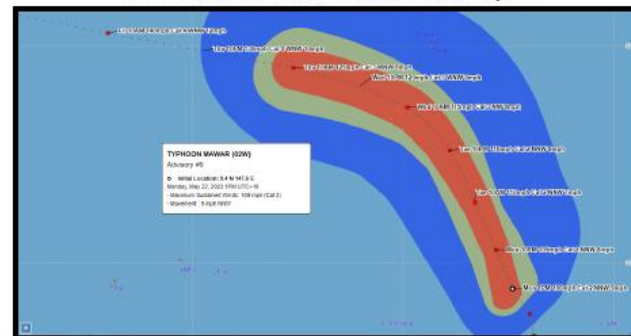
[Flash Flood Watch: Guam/CNM/](#) [High Surf Advisory: Guam/CNM/](#) [Small Craft Advisory: Guam/CNM/](#)

#### SUPPLEMENTAL GRAPHICS:

#### Joint Typhoon Warning Center Warning Graphic for Tropical Storm Mawar (02W):

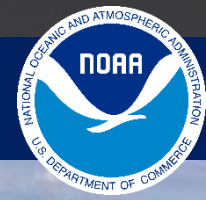


#### NWS Guam Deterministic Wind Forecast Graphic:

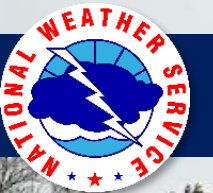
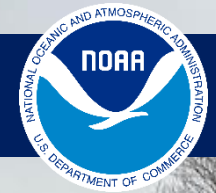


This Regional Weather Outlook for the WFO Guam Area of Responsibility in the western North Pacific from the Equator to 25N from 130E to the Date Line is issued weekly on Tuesdays by 12:00 PM ChST. Information is prepared as an additional Decision Support Service for regional Weather Offices and Core Partners & complements routine WFO Guam Forecasts found at [www.weather.gov/gum](http://www.weather.gov/gum)

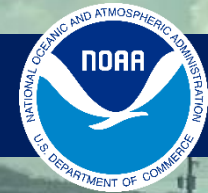
# Not 'IF' but 'WHEN'



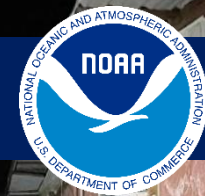
# Mawar's Aftermath



# Mawar's Aftermath



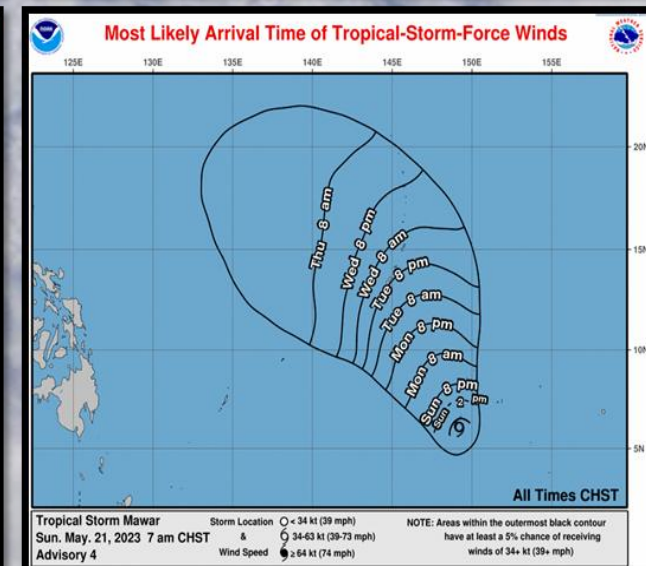
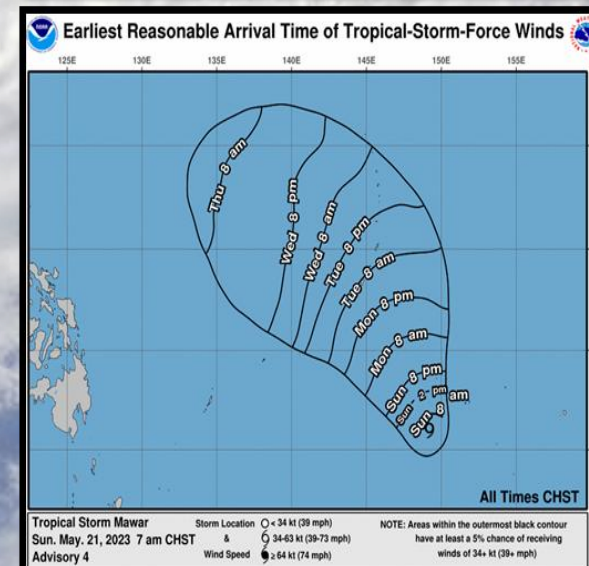
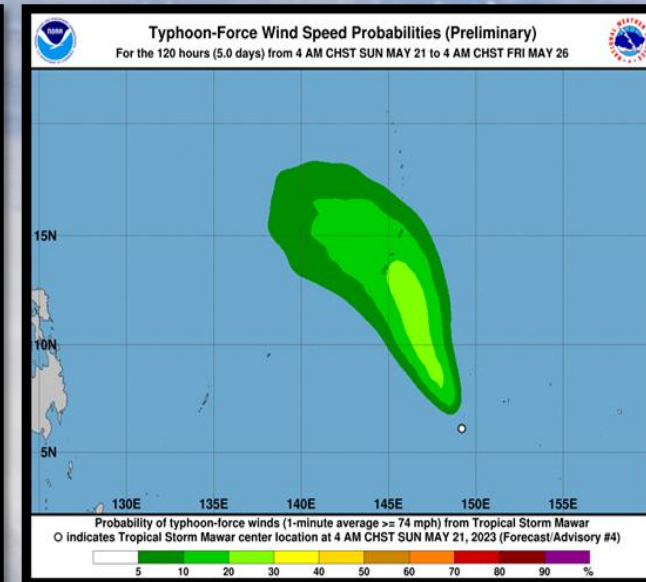
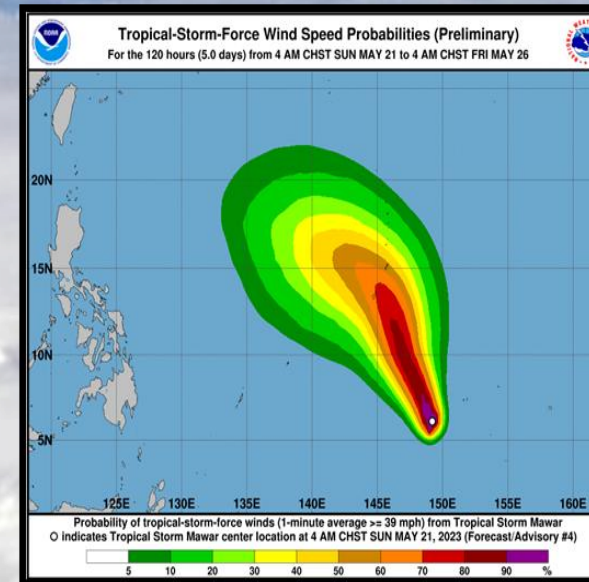
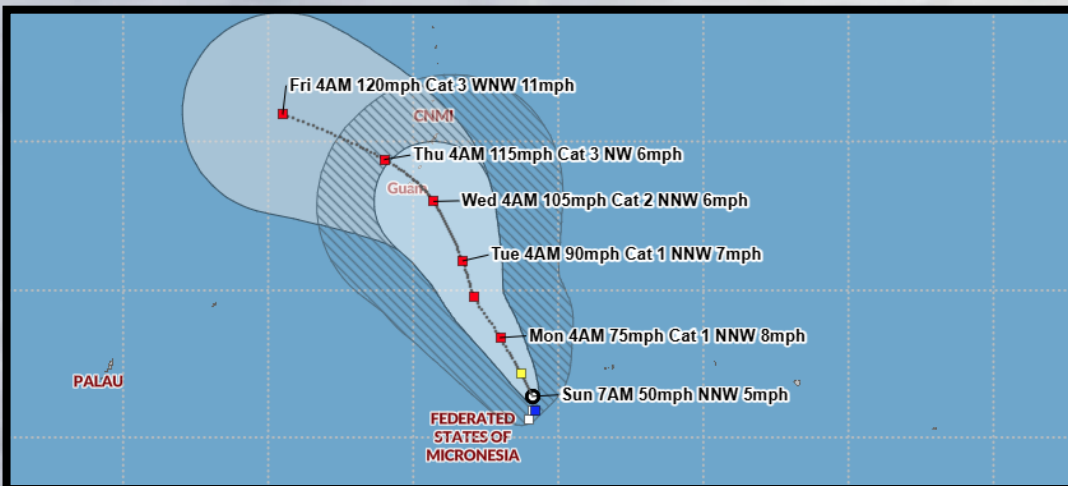
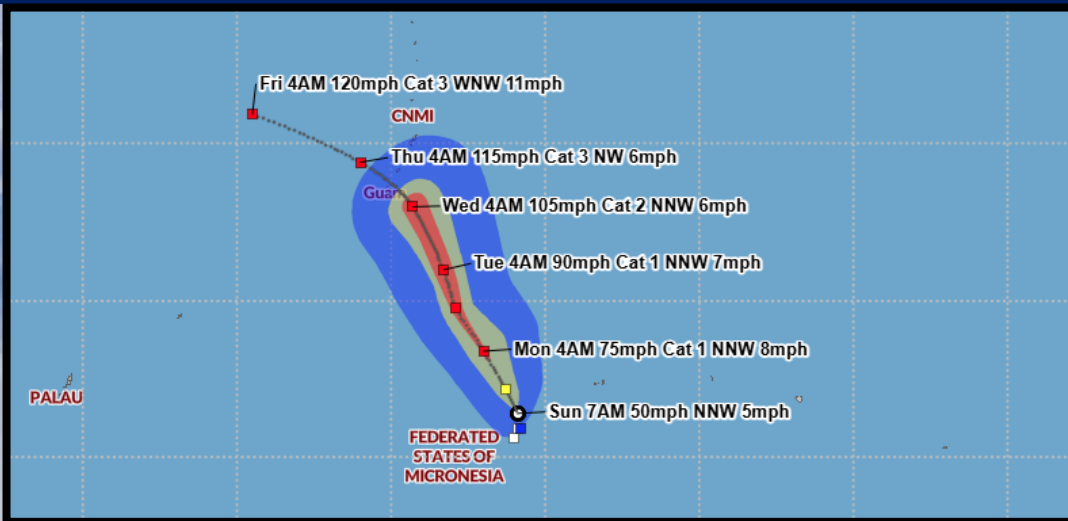
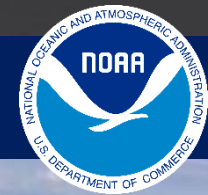
# Mawar's Aftermath



# Operational Changes & Situational Awareness



# NWS Guam Tropical Cyclone Graphics



GRAPHICS AVAILABLE ON NWS GUAM WEB PAGE WILL MOVE AWAY FROM THE DETERMINISTIC PLOTS (ABOVE) TO THE PROBABILISTIC PLOTS (TO THE RIGHT). THE DETERMINISTIC WILL STILL BE AVAILABLE AND REFERENCED IN HEAVY WEATHER BRIEFS

# For More Information



# NWS Guam Web Page: Where to Find TC Info



**NATIONAL WEATHER SERVICE**  
NATIONAL OCEANIC AND ATMOSPHERIC ADMINISTRATION

HOME FORECAST PAST WEATHER SAFETY INFORMATION EDUCATION NEWS SEARCH ABOUT

Local forecast by "City, ST" or ZIP code  
Enter location ...

News Headlines  
• [Hafa Adai from the Guam Weather Forecast Office!](#)

**NWS Forecast Office - Tiyan, Guam**  
Weather.gov > Tiyan, GU

Current Hazards Current Conditions Radar Forecasts Rivers and Lakes Climate and Past Weather Local Programs

Click a location below for detailed forecast.

Watches, Warnings & Advisories  
There are no watches, warnings, or advisories at this time.

Text Product Selector (Selected product opens in new window)  
Latest Text Products Issued by GUM

MY FORECAST  
Tiyan GU  
Fair  
89°F  
32°C  
Tonight  
Isolated Showers  
Low: 78°F  
Thursday  
Isolated Showers  
High: 88°F

San Jose (Tinian)  
San Jose (Saipan)  
Sinapalu  
Hagana  
Gededo

Last Map Update: Wed, Jun. 16, 2021 at 4:18:02 pm CHST

change location

Links for national weather info

Click or hover over for drop-down menus

**NATIONAL WEATHER SERVICE**  
NATIONAL OCEANIC AND ATMOSPHERIC ADMINISTRATION

MY FORECAST  
Tiyan GU  
Fair  
89°F  
32°C  
Tonight  
Isolated Showers  
Low: 78°F  
Thursday  
Isolated Showers  
High: 88°F

**Tropical Cyclones**  
Weather.gov > Tiyan, GU > Tropical Cyclones

Current Hazards Current Conditions Radar Forecasts Rivers and Lakes Climate and Past Weather Local Programs

**Tropical Cyclones**  
Active Watches & Warnings  
Weather Radio

NO active tropical cyclones at this time.  
Wed, Jun 16, 4:27 PM CHST

Printer-friendly typhoon tracking sheet (javascript)

Tropical Cyclone Public Advisories issued by WFO Guam for Guam, the Marianas and Micronesia are available via xml feed at <https://www.weather.gov/gum/cmh/xml/HFOTCPPO.xml>.

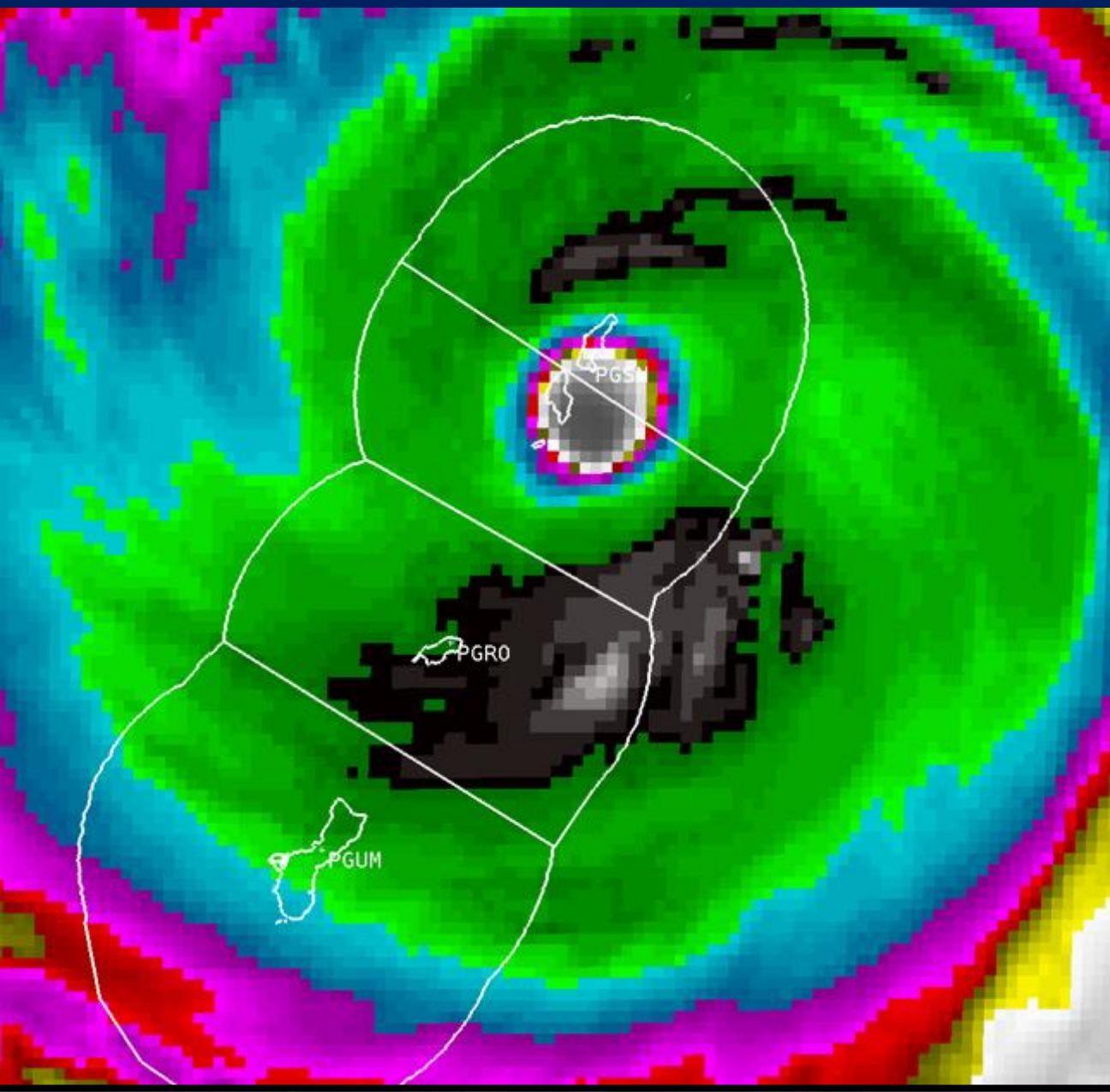
**Related Links**  
[Post Storm Tropical Cyclone Report](#) Issued: 06/04/2021 07:34:54 PM CHST  
[NWS Guam Tropical Cyclone AoR](#)  
[Tropical Cyclone Products we issue](#)  
[Historical Tropical Cyclones Affecting Guam \(1671-1990\)](#)  
[Joint Typhoon Warning Center \(JTWC\)](#)  
[Guam Homeland Security Office of Civil Defense](#)  
[WMO Worldwide Tropical Cyclone Information](#)  
[Emergency Management Office for CNMI](#)

change location

Click or hover over "Current Hazards" and select "Tropical Cyclones" to see our TC Page

[www.weather.gov/gum](https://www.weather.gov/gum)

# Looking Back & Thinking Ahead



## Questions To Ponder

1. **Who is in a current role/job for less than 2 years?**
2. How are you receiving weather information?
3. What information (weather, preparedness, etc.) is being communicated to the public? From your office/organization?
4. How are you communicating such information?
5. What actions are you taking at this point?
6. What are your fears? Concerns? Stressors?
7. What steps (if any?) is your organization taking to prepare?
8. What is your operational strategy in coordinating with other agencies, offices and organizations?
9. How about YOU? Your family? Your home?
10. What's your organization's post-storm plan?
11. Are you ready for the transition from pre-storm to post-storm? Preparedness to response and recovery?

# Thank You!



## NWS Weather Forecast Office Guam

Marcus Landon Aydlett  
Warning Coordination Meteorologist  
[Marcus.Aydlett@noaa.gov](mailto:Marcus.Aydlett@noaa.gov)  
671-777-5337 (Cell) (WhatsApp)  
"Landon Aydlett" (Facebook)

WFO Guam Operations:  
[nws.gum.operations@noaa.gov](mailto:nws.gum.operations@noaa.gov)  
671-472-0900

WFO Guam: [www.weather.gov/gum](http://www.weather.gov/gum)  
Facebook: [www.facebook.com/NWSGuam](http://www.facebook.com/NWSGuam)  
Twitter: [www.twitter.com/NWSGuam](http://www.twitter.com/NWSGuam)



Guam Homeland Security/Ofc of Civil Defense  
[www.ghs.gum.gov](http://www.ghs.gum.gov)  
[www.facebook.com/GHSOCD](http://www.facebook.com/GHSOCD)



CNMI Homeland Security & Emergency Mgmt  
[www.cnmihsem.gov.mp](http://www.cnmihsem.gov.mp)  
[www.facebook.com/cnmieocswp](http://www.facebook.com/cnmieocswp)

[www.weather.gov/gum/WSOMajuro](http://www.weather.gov/gum/WSOMajuro)



Yokwe!



[www.weather.gov/gum/WSOPohnpei](http://www.weather.gov/gum/WSOPohnpei)



Kaselehlie!



[www.weather.gov/gum/WSOChuuk](http://www.weather.gov/gum/WSOChuuk)



Ran Annim!



[www.weather.gov/gum/WSOYap](http://www.weather.gov/gum/WSOYap)



Mogethin!



[www.weather.gov/gum/WSOPalau](http://www.weather.gov/gum/WSOPalau)



Alii!

