



# Federated States of Micronesia

## Ridge to Reef Project

*Inception workshop Report  
December 2016*



## Table of Contents

<b>1. INTRODUCTION .....</b>	<b>1</b>
1.1. PROJECT BACKGROUND.....	1
1.2. PROJECT COMPONENTS, OUTCOMES AND OUTPUTS .....	1
1.2.1 PROJECT COMPONENT 1 .....	1
1.2.2 PROJECT COMPONENT 2 .....	2
<b>2. PROJECT DOCUMENT UPDATE .....</b>	<b>3</b>
2.1. CHANGES IN THE STRATEGIC RESULTS FRAMEWORK.....	3
2.2. CHANGES TO THE PROTECTED AREA (PA) LIST .....	3
<b>3. OFFICIAL OPENING.....</b>	<b>4</b>
<b>4. NATIONAL WORKSHOP PROCEEDINGS.....</b>	<b>4</b>
4.1. INCEPTION WORK OBJECTIVES AND EXPECTATIONS .....	4
4.2. INTRODUCTION TO THE PROJECT STRATEGY AND APPROACH.....	5
4.2.1 PROJECT RATIONALE .....	5
4.2.2 BARRIERS TO ACHIEVING SOLUTION .....	6
4.3. STAKEHOLDER INVOLVEMENT AND PARTICIPATION .....	6
4.4. PROJECT IMPLEMENTATION AND REPORTING .....	6
4.4.1 WORK PLAN .....	6
4.4.2 MANAGEMENT ARRANGEMENTS .....	8
<b>5. NEXT STEPS TO KICK-START PROJECT IMPLEMENTATION .....</b>	<b>10</b>
5.1. DEVELOPMENT OF ANNUAL WORK PLAN .....	10
5.2. COORDINATED WORK-PLANNING AT STATE LEVEL .....	10
5.3. PAN FRAMEWORK AND CROSS-SECTORAL COORDINATION.....	11
<b>6. WAY FORWARD .....</b>	<b>11</b>
<b>7. EVALUATION OF INCEPTION WORKSHOP .....</b>	<b>11</b>
<b>8. LESSONS LEARNED .....</b>	<b>12</b>
<b>9. NATIONAL WORKSHOP CLOSURE .....</b>	<b>12</b>
<b>ANNEXES</b>	
ANNEX 1: INCEPTION WORKSHOP PROGRAM .....	14
ANNEX 2: ATTENDANCE LIST OF PARTICIPANTS .....	18
ANNEX 3: PROJECT RESULTS FRAMEWORK .....	20
ANNEX 4: LIST OF UPDATED PAS FOR EACH STATE.....	26
ANNEX 5:2017 ANNUAL WORK PLAN .....	29

**ACRONYMS** (adapted from the Proposal document)

ABS	Area of Biodiversity Significance
AG	Attorney General
BSAP	Biodiversity Strategic Action Plan
CBO	Community-based organization
CCO	Community Conservation Officer
CCS	Chuuk Conservation Society
CEPF	Critical Ecosystem Partnership Fund
CES	Cooperate Extension Service (FSM COM)
CHM	FSM Clearing-House Mechanism (FSM CHM)
CI	Conservation International
COM	College of Micronesia
CSP	Conservation Society of Pohnpei
DFMC	Pohnpei State Division of Forestry and Marine Conservation
DFW	Pohnpei State Department of Public Safety's Division of Fish and Wildlife
DLNR	Pohnpei State Department of Land and Natural Resources
DLNR-F	Pohnpei State Department of Land and Natural Resources - Forestry Division
DREA	Department of Resources and Economic Affairs
DSAP	Development Sustainable Agriculture in the Pacific
EBM	Ecosystem-Based Management
EEZ	Exclusive Economic Zone
EIA	Environmental Impact Assessment
EPA	Environmental Protection Agency
EU	European Union
FA	Farmer's Association
FIA	Forestry Inventory Assessment
FSM	Federated States of Micronesia
FSP	Full Sized Project
FY	Financial Year
GDP	Gross Domestic Product
GEF-UNEP	Global Environmental Facility – United Nations Environmental Programme
GIS	Geographic Information System
GLISPA	Global Island Partnership
IAS	Invasive Alien Species
IEMP	Integrated Environmental Management Plan

IFCP	Island Food Community of Pohnpei
ILMP	Integrated Land Management Plan
IMS	Information Management System
INRM	Integrated Natural Resource Management
IOM	International Organisation for Migration
IST	Invasive Species Taskforce
iSTOP	Invasive Species Taskforce of Pohnpei
IWRM	Integrated Water Resource management
KCSO	Kosrae Conservation and Safety Organization
KIRMA	Kosrae Island Resources Management Authority
KLUP	Kosrae Land-use Plan
LD	Land degradation
MC	Micronesia Challenge
MCT	Micronesia Conservation Trust
MDG	Millennium Development Goals
METT	Management Effectiveness Tracking Tool
MERIP	Marine and Environmental Institute of Pohnpei
MIC	Micronesians in Island Conservation
MINA	Micronesia (previously Mariana) Islands Nature Alliance
MIS	Management Information System
MOU	Memorandum of Understanding
MPA	Marine Protected Area
MPAME	Marine Protected Area Management Effectiveness
MSP	Medium Size Project
MTC	Making the Case
NAP	National Action Plan
NBSAP	National Biodiversity Strategy and Action Plan
NCD	Non-Communicable Diseases
NEMS	National Environmental Management Strategies
NGO	Non-governmental Organization
NRCS	Natural Resources Conservation Service
NSDS	National Sustainable Development Strategies
NTMPAs	No-take Marine Protected Areas
OEA	Office of Economic Affairs
OEEM	FSM Office of Environment and Emergency Management

OFA	Pohnpei State Office of Fisheries and Aquaculture
PAs	Protected Areas
PAC	Piggery Advisory Council
PACC	Pacific Adaptation to Climate Change
PAN	Protected Area Network
PB	Project Board
PFA	Pohnpei Farmers Association
PICs	Pacific Island Countries
PIMPAC	Pacific Islands Managed and Protected Areas Community
PIU	Project Implementation Unit
PREL	Pacific Resources for Education and Learning
PRMC	Pohnpei Resource Management Committee
R&D	FSM Department of Resources and Development (FSM R&D)
R2R	Ridge-to-Reef
RARE	Rare
REA	Rapid Ecological Assessment
RMC	Resource Management Committee
RSTC	Regional Scientific and Technical Committee of the Pacific Island Community
SAP	Strategic Action Plan
SBOC	Statistics Budget and Economic Management Overseas
SD	Sustainable Development
SDP	Sustainable Development Plan
SEA	Strategic Environmental Assessment
SLM	Sustainable Land Management
SPC	Secretariat of the Pacific Community
SPREP	Secretariat of the Pacific Regional Environment Program
STAR	GEF System for Transparent Allocation of Resources (STAR) projects
TAC	Technical Advisory Committee
TNC	The Nature Conservancy
UNDP	United Nations Development Programme
USFS	United States Forestry Service
WFR	Watershed Forest Reserve
YELA	Yela Environmental Landowners Authority

## 1. Introduction

### 1.1. Project Background

In April 2011, the first round of consultation activities took place in Yap through the 3rd National Environment Conference. On August 31 – September 1, 2011, the National Portfolio Framework Exercise (NPFE) meeting was conducted with the primary objective of finalizing priority areas of focus to be addressed with funding from GEF OP5. The Project Identification Form (PIF) was developed in February 2013 using the identified activities from the NPFE exercise. The PIF then was submitted for GEF Consideration in June 2013. The GEF Council approved the PIF and awarded FSM the project planning grant to begin the development of its full proposal beginning August 23, 2013, with a series of State and National consultations undertaken over two years. In May 2015, the project was conceptualized and resubmitted to GEF where it was approved in November of the same year. The GEF R2R Project approval was announced at the 5th Environment Conference held in Chuuk in August 2016. On October 25-26, 2016, the R2R Project was officially launched with its project inception workshop.

In preparation for the Inception Workshop, pre-inception consultations were held from October 17-21, 2016 with key government and NGOs stakeholders. They were led by the Project Manager with support from the Inception Workshop technical advisor. The purpose of the pre-inception consultations was to 1) clarify institutional roles of key project stakeholders; 2) collect information on ongoing efforts related to R2R; 3) secure support for R2R activities; and 4) inform stakeholders on status of the R2R project. The consultations played a key role in preparing for the workshop through 1) understanding expectations of project stakeholders for the Inception Workshop; and 2) determining the level of involvement with R2R related activities both at the National and State level.

The goal of the National Ridge to Reef (R2R) Project, worth USD 4.69M and funded by the Global Environment Facility (GEF) through the United Nations Development Program (UNDP) is to implement an integrated “Ridge to Reef” approach to enhance ecosystem services, to conserve globally important biodiversity and to sustain local livelihoods in the FSM.

The R2R project will be implemented on the main islands “high islands” of the four states of the FSM. It is designed to engineer a paradigm shift towards management of natural resources with an ecosystem-based management of “ridge to reef”. Inherent in this R2R approach are principles of multi-sectoral coordination in the planning and evidence-based management that strikes a balance between coastal livelihoods and biodiversity conservation, risk reduction, climate variability and climate change.

### 1.2. Project Components, Outcomes and Outputs

#### 1.2.1 Component 1: Integrated Ecosystems Management and Rehabilitation on the High Islands of the FSM to enhance Ridge to Reef Connectivity, or Sustainable Land-use Management

Outcome 1	OUTPUTS
Integrated Ecosystems Management and Rehabilitation on the High Islands of the FSM to enhance Ridge to Reef Connectivity	1.1 Four Integrated Landscape Management Plans (ILMPs) are developed and implemented for the High Islands of the FSM:  1.1.1 Strategic Environmental Assessments (SEA) conducted for the High Islands.  1.1.2 Spatially-based decision support systems for INRM are developed and made available for use in EIA, policy

Outcome 1	OUTPUTS
	<p>development, multi-sector ecosystem-based planning &amp; management.</p> <p>1.1.3 Multi-sector planning forum is established to facilitate the development of ILMPs for the High Islands in each state</p> <p>1.2 Institutions with sectoral responsibilities for the development and conservation of the High Islands, together with relevant CSOs and community partners, are capacitated for coordinated action at the wider landscapes on SLM</p> <p>1.3 Additional finances for SLM investments (including PA management costs) secured and existing contributions to the environmental sector to support SLM practices aligned.</p> <p>1.3.1 Making the Case for SLM through valuation of goods and services of natural systems as well as different SLM practices is conducted as a basis for brokering new public and donor finance for BD conservation and SLM</p> <p>1.4 Management and rehabilitation of critical ecosystems implemented to enhance functional connectivity, reduce erosion, improve water quantity and quality and reduce coastal flooding.</p>

**1.2.2 Component 2: Management Effectiveness enhanced within new and existing PAs on the High Islands of FSM as part of R2R approach, or Protected Area Management**

Outcome 2	OUTPUTS
<p>Management Effectiveness enhanced within new and existing PAs on the High Islands of FSM as part of R2R approach (both marine and terrestrial)</p>	<p>2.1 National and State-level Legal and Institutional Frameworks have been established to improve management effectiveness of PAs.</p> <p>2.1.1. The National Department of Resources and Development and State PA Agencies are actively involved and capacitated to perform centralized PA management functions such as planning, finance and legal affairs cost effectively.</p> <p>2.1.2. A standardized PA reporting and performance monitoring system has been implemented. And a National biodiversity/ecological monitoring and information system has been established</p> <p>2.1.3. An integrated and adaptive PA management decision support system is established at State and National levels to facilitate biodiversity, financial and risk (climate change and land-use pressures) adaptive management planning and decision-making.</p>

Outcome 2	OUTPUTS
	<p>2.2 The PAN of the High Islands has been expanded, and existing and new PAs of the FSM have been secured through a review and upgrading of legal protection status (gazetting of all PAs).</p> <p>2.3 Management authorities (state and community) of newly established PAs are equipped and capacitated in managing PAs.</p> <p>2.4 Effective site and cross-site level PA management practices promoted in new and existing PAs:</p> <p>2.4.1 Improved PA management planning and boundary demarcation have been implemented</p> <p>2.4.2 Improved zoning and boundary demarcation based on and aligned to the ILMP, and SEA</p> <p>2.4.3 Biological/ecological monitoring systems have been implemented.</p> <p>2.4.4 Enforcement of PAs has been strengthened</p> <p>2.4.5 Communities have been capacitated to better management of specific land-use pressures at the site-level.</p>

## 2. Project Document Update

### 2.1. Changes in the Strategic Results Framework

Prior to the project inception, the Project Document (ProDoc) was circulated among key stakeholders at the State level to assist in preparing their respective delegations for the upcoming 2 days workshop. The State of Chuuk, while reviewing the ProDoc, revised the size of its existing Witipon terrestrial PA (from 2ha to 2,161ha). This key change was not reflected in the final draft as highlighted during the drafting process, and is highly crucial to document as it affects the targeted goals indicated in the project's Strategic Results Framework (SRF).

The revised SRF is provided in Annex 3. The main change is as follows:

- The end of project target for terrestrial protected areas (based on the revision) increased from 10,033 ha to 12, 192 ha. Hence, the overall total of project target for all 40 PA sites (marine and terrestrial) grew from 24,986 ha to 27, 145 ha.

No other changes were made to the SRF during the Inception Workshop. However, States were tasked to complete the process of verifying and updating their respective PA site lists to ensure any new information that may affect the SRF is captured and recorded.

### 2.2. Changes to the Protected Area (PA) List

The revised PA list is attached as Annex 4. The main change includes an updated version (as of 2014) of Yap's existing PA list. The ProDoc includes only six (6) of Yap's existing PA sites, four marine and two terrestrial protected areas. The updated list is more comprehensive, breaking down all existing PA sites (from the main island to the outer islands) into three categories: marine, terrestrial and mangrove protected areas. The other three States have yet to confirm their respective lists.



Furthermore, any changes affecting the overall list as a result of the verification process shall be noted and reported in the project's quarterly reports.

### **3. Official Opening**

The Inception Workshop was held at the Pohnpei State Governor's Conference Room, Peilapalap, Kolonia on the 25<sup>th</sup> - 26<sup>th</sup> of October, 2016. Opening of the Inception workshop was officiated by H.E. Reed B. Oliver, Pohnpei State Lt. Governor.

In his opening remarks, the Lt. Governor of Pohnpei emphasised on our connectedness and that *"what affects our mountain ridges, impacts our lagoon reefs. What we do in our watershed will affect the marine resources we rely on for our livelihood"*. Lt Governor urged the R2R stakeholders to *"...carefully consider the type of activities needed to protect and sustain the management of our natural resources. Like any issue that we cannot afford to be bipartisan to, we cannot separate our ridges from our reefs"*. The agenda of the workshop is attached (Annex 1).

### **4. National Workshop Proceedings**

#### **4.1. Inception Work Objectives and Expectations**

A fundamental objective of the Inception Workshop was to assist the key stakeholders, including project team, to understand and take ownership of the project's goals and objectives, as well as finalize preparation of the project's first annual work plan and budget on the basis of the project's Strategic Results Framework.

With such high level of autonomy to individual States scribed with its own legislation and institutional framework, it was recognized that a similar inception process will need to be facilitated back at state level to understand the R2R project and finalize the first annual work plan. The Strategic Results Framework (indicators, means of verification, assumptions), imparting additional details as needed, and on the basis of this exercise, finalize the Annual Work Plan (AWP) with precise and measurable performance indicators, and in a manner consistent with the expected outcomes.

Additionally, the purpose and objective of the Inception Workshop was to: (i) introduce stakeholders to the newly established PIU and State Coordinators, as well as the UNDP team that will support the project; (ii) link up R2R with ongoing key initiatives at individual states and build on those lessons from the Micronesia Challenge (MC); and (iii) provide a detailed overview of management arrangements by UNDP. The Inception Workshop also provided an opportunity for all parties to understand their roles, functions, and responsibilities within the project's decision-making structures, including reporting and communication lines. Aspects of GEF reporting and monitoring and evaluation (M&E) requirements, with particular emphasis on the Annual Project Implementation Reviews (PIRs) and related documentation, as well as mid-term and final evaluations was highlighted. It provided an opportunity to inform the stakeholders on UNDP project related budgetary planning and budget reviews.

The session on management arrangements by UNDP prompted combined interest across State stakeholders on budgets and efficiency of disbursement of funds (with confirmed work plans) from national government down to the state level. Roles and responsibilities of project organization structure were clarified with few matters of discussion to be followed up by the PIU including: (i) Terms of Reference for the membership of the Project Board at national government; and (ii) Project Advisory Committee at State level and communications protocol back to PIU.



Figure 1: Floyd Robinson of UNDP office in Suva stresses a point during the session on Management Arrangements

An induction training was scheduled after the two days of the Inception Workshop targeting the State Coordinators. The second half of induction day was utilized by PIU to work with the four State Coordinators to group-review their drafted work plans against the project results framework with its set of indicators, targets and means of verification, and recheck assumptions and risks. State Coordinators were to follow up with their key agency partners to confirm and finalize draft work plans for submission to PIU by the end of November. A consolidated work plan by PIU would then be submitted to UNDP for confirmation and processing of an advance to be disbursed by January 2017 for activities.

## 4.2. Introduction to Project Strategy and Approach

### 4.2.1 Project rationale

The FSM experiences very high rates of ecosystem degradation and biodiversity loss, particularly in the aquatic environments, despite numerous interventions to improve capacities to manage biodiversity. The R2R project will work in the four States, in global biodiversity hotspots and national priority areas under threat and in need for biodiversity conservation, namely: Yap, Chuuk, Pohnpei and Kosrae States. The drivers of this degradation and biodiversity loss stem from:

- Infrastructure development, urbanization, home building, in-filling, commercial agricultural expansion, small-scale logging for timber and firewood;
- Mangrove forests depleted through expansion of coastal infrastructure, increased settlements in littoral areas, and the harvesting of trees for timber and firewood;
- Overfishing and overhunting has been identified as the most urgent and critical threat across marine and terrestrial areas of interest for conservation in all the states and this is exacerbated by unsustainable fishing intensities;
- Pollution in the form of farm waste from piggeries and soil erosion is a major cause of land and water pollution (including freshwater, estuarine and marine). Invasive species have led to the extinction of several endemic species;
- Climate change is predicted to vary widely and this will exacerbate existing natural resource and sustainable development challenges;
- The impact of the existing unsustainable agricultural practices and unplanned development will be further compromised by the limitations of government to effectively implement its programs and policies;
- Both government and civil society organisations require additional tools and capacity building interventions to address the scale of the sustainable development challenges in FSM.

Government capacity requires strengthening and support to manage ecosystems, work with landowners and communities, and to facilitate coordination between government institutions which regulate land and natural resources use.

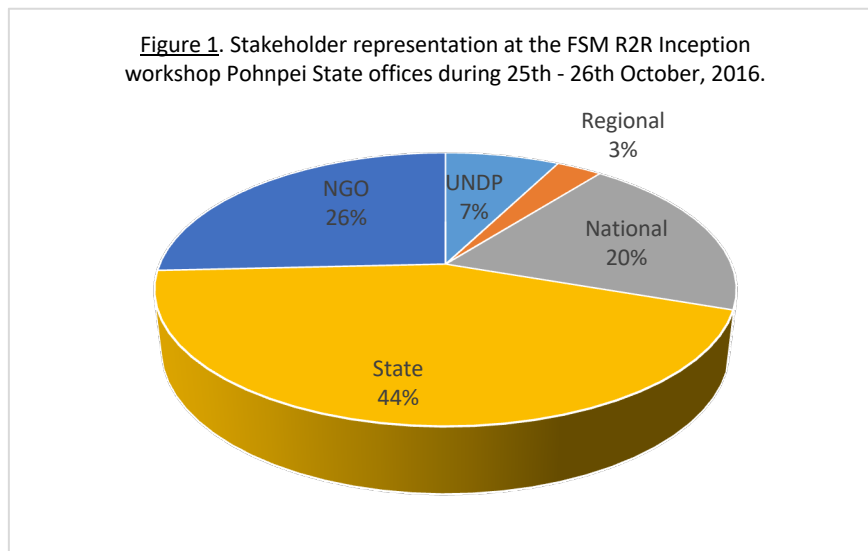
#### 4.2.2 Barriers to Achieving the Solution

However, the following barriers were identified and have to be taken into consideration when implementing the above-mentioned strategy:

- Lack of an overarching framework for promoting sustainable development in the FSM's High Islands, including systemic capacities and availability of critical information / knowledge and funding;
- Inadequate PA representation and capacities to effectively conserve biodiversity of the High Islands of the FSM;

#### 4.3. Stakeholder Involvement and Participation

The different agencies and participating stakeholder representatives (66) involved in the coordinated implementation of R2R activities were asked to indicate which outcome and outputs they expected to contribute towards and be involved with at the state level. Figure 1 illustrates the extent of representation amongst the number of stakeholders presented.



#### 4.4. Project Implementation and Reporting

##### 4.4.1 Work-plan

The project budget summary was presented by UNDP. State stakeholders were in mixed groups, first to discuss, then brainstorm on R2R project outputs including potential risks and gaps that needed to be addressed in order to deliver on the following listed outputs:

1.1 *Four Integrated Landscape Management Plans (ILMPs) are developed and implemented for the High Islands of the FSM:*

- Mapping and demarcation of PAs that needed updating of its listing per state
- Update SWARS
- State-wide management plan-develop
- Harmonize policy/legislation at State, national and municipal level
- Terrestrial monitoring measures/indicators
- Identify and prioritize existing threats and develop strategies
- Incorporate other projects (sedimentation, solid waste management) into ILMPs



Figure 2: Pohnpei State work planning team lead by Mr. Jorg Anson, State Coordinator

1.2 *Institutions with sectoral responsibilities for the development and conservation of the High Islands, together with relevant CSOs and community partners, are capacitated for coordinated action at the wider landscapes on SLM:*

- Coordination amongst state-level environmental agencies and a community based organizations in development of budgets and work plans
- Strengthen MC communications group
- Data analysis training
- Lack of awareness on MC achievements
- Clearing house mechanism for data and information management
- Communicating MC to general public
- Training terrestrial/socio-economic measures protocols

1.3 *Additional finances for SLM investments (including PA management costs) secured and existing contributions to the environmental sector to support SLM practices aligned:*

- Support from regional organizations like USFS, NRCS
- Protected Area Bill
- FSM National Government fishing fee
- Support for COM-FSM/land grant programs
- NGO and CBO with private sector support.

1.4 *Management and rehabilitation of critical ecosystems implemented to enhance functional connectivity, reduce erosion, improve water quantity and quality and reduce coastal flooding.*

- Coastal and uplands rehabilitation and management
- Mangrove and watershed management
- Planting/rehabilitation of upland vegetation
- EBM network
- Dry litter piggeries
- Land use planning
- Spatial analysis to inform decision making.



Figure 3: Ms. Kriskitina Kanemoto (State Coordinator) facilitating Chuuk's work planning session

2.1 *National and State-level Legal and Institutional Frameworks have been established to improve management effectiveness of PAs.* Group's discussion included output 2.2.

2.2 *The PAN of the High Islands has been expanded, and existing and new PAs of the FSM have been secured through a review and upgrading of legal protection status (gazetting of all PAs).*

- Kosrae: PA Act of 2010 –need to be updated; the enforcement of existing PA legislation with funding and capacity limitations.
- Pohnpei: Watershed Law of 87- needs community involvement and support with enforcement; to finalize the proposed mangrove protected areas including the MPAs.
- Yap: All PAs to be gazetted.

2.3 *Management authorities (state and community) of newly established PAs are equipped and capacitated in managing PAs.*

- Pass the national PA Framework and Yap State PAN law
- Consultation w/ leadership (national, state, etc.)
- Review existing policies, legislation, etc. to ensure alignment of R2R activities with ongoing activities scribed under related environmental policies
- Ecosystem based fisheries management with fisheries management plans as a result of community consultation and awareness activities.

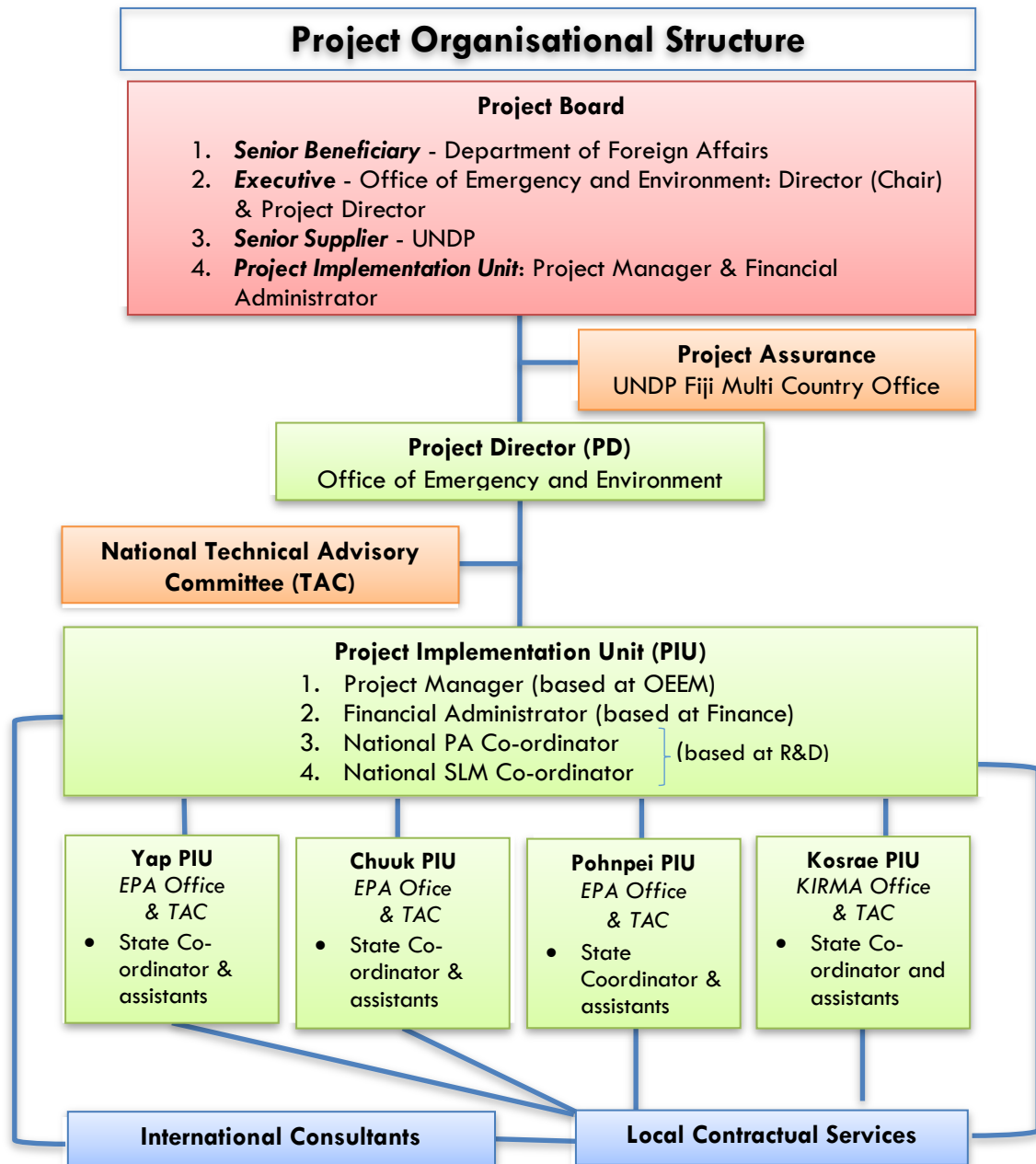
2.4 *Effective site and cross-site level PA management practices promoted in new and existing PAs.*

- MC measures standardized for adoption and communicate indicators to stakeholders at state level
- MPAME replication at new sites; marine ecological assessment; FIA; strategic environmental management plans
- Coral reef and forest monitoring and analysis.

#### **4.4.2 Management Arrangements**

The PIU is located at the FSM National Government, Office of Environment and Emergency Management. At the time of the Inception Workshop, the national SLM and PA coordinators had not been recruited. The membership and terms of reference (ToR) for the national Project Board was

discussed at length in terms of its oversight and approval process of State activities at national level. Follow up actions for PIU includes the development of ToR for the Project Board and scheduling of its first board meeting.



## 5. Next steps to kick-start Project Implementation

### 5.1. Development of Annual Work Plan (AWP)

Due to limited days of the Inception Workshop, each State was unable to complete their respective AWP. The State Coordinators were tasked to return to their respective States and facilitate the completion of each work plan for submission to the PIU by November 2016. The PIU will consolidate each respective work plan into an overall 2017 AWP and submit to UNDP by January 2017 for endorsement. The endorsed 2017 AWP is attached as Annex 5.

### 5.2. Coordinated work-planning at State level

Feedback from individual States on the development of its annual work plan with partner agencies highlighted:

In Chuuk: Kriskitina Kanemoto (State Coordinator) facilitated three meetings on the 10<sup>th</sup>, 25<sup>th</sup> and on 29<sup>th</sup> November to develop its annual work plan. Key points raised in discussion:

- Inclusion of traditional leadership for every planned meeting/ consultation and implementation of R2R activities.
- The fact that 99% of marine and terrestrial areas are privately owned by families or clans, local leadership will be vital for sustainability of activities. Proposed activities for 2017 were then budgeted according to its allocation.
- Query was posed regarding the hiring of two coordinators for SLM and PA in each state. At present two posts would be recruited by FSM R&D to coordinate from the national level, aspects of SLM and PA, as well as support each State Coordinator to implement activities.

In Kosrae: Blair Charley (State Coordinator) facilitated the dialogue amongst his stakeholders over a series of four meetings on the 2<sup>nd</sup>, 9<sup>th</sup>, 16<sup>th</sup> and the 23<sup>rd</sup>, November to finalize work plan and submission to PIU. Key points raised in the work planning included:

- Focus on the development of the SEAs in the first year.
- Propose raising the awareness and promotion of traditional land care practices.
- Conduct a capacity needs assessment of existing and proposed PAs, its current resources and determine capacity building activities that national PIU could assist the states with.
- Seek clarification from the National PIU regarding the direct transfer of funding to the State based on per activity proposed. Reason for query, project funds can be used to leverage support in areas already experiencing budget cuts from compact funding. It was understood that disbursement of funding will be done from the national government (PIU) once a request was submitted and verified to be aligned with its respective work plan.

In Pohnpei: Jorg Anson (State Coordinator) facilitated two meetings, and one-on-one stakeholder sessions to develop Pohnpei's annual work plan. During this time, Pohnpei also established its Technical Advisory Committee. Highlights included:

- Visibility plans for project activities in the pipeline e.g. plans for local radio interviews on Pohnpei State (V6AH Radio) in favorite program called "Rahnwet Nan Pohnpei".
- Kick-start on communications with results of available work carried out on Pohnpei that R2R will build on those activities i.e. contribute articles to the local newspaper "Kaselehlle Press".
- In discussion with Rare Manager on-island to design a campaign promoting activities and environment messaging.

In Yap: Debra Laan (State Coordinator) facilitated three meetings on the 10<sup>th</sup>, 18<sup>th</sup> and 30<sup>th</sup> of November to discuss the work plan drafted during the Inception workshop on the 26<sup>th</sup> of October. In finalizing the State work plan, Debra with the support of the EPA Director and Department of Resources and Development Deputy Director, coordinated discussions with stakeholders and PIU through emails. Key concerns raised by stakeholders/partnering agencies included:

- Financial aspects of the project and state allocation.

- In the case when drawdown is late, such that activities cannot be implemented within the quarter, can the activities be pushed to the next quarter?
- In the case when one agency listed an item to be purchased then later in the year, decides to replace the budgeted item with a different item. What is the procedure to seek revision? A work plan with a budget aligned to expected outputs to be delivered will be the guide to implementation. Procurement of fixed assets not identified in the project document is usually not allowable unless a case is presented to PIU and communicated to UNDP for approval.

### 5.3. PAN Framework and cross sectoral coordination

The presentation by MCT highlighted lessons of the Micronesia Challenge in the FSM and the opportunity for the R2R project to build upon, as follows:

- Adoption of the FSM PAN Framework by national government and establishment of the technical review committee;
- FSM to complete commitment to the MC endowment fund;
- Identify and secure local sources of funding i.e. Green fee, Tuna licensing fee that can support the FSM MC endowment fund;
- R2R project to provide support for Yap and Chuuk to establish their PAN laws.

The rationale to initiate planning for SEAs in the first year of R2R implementation allows data gaps and review of indicators to be dealt with at the very early stages of the project, particularly during baseline assessments. Project activities to be informed as much as possible by research and scientific information, hence, the role of State Coordinators involve building relations with partners to network, learn and explore opportunities for cost-sharing, exchange data/ information that can inform management planning.

An ecosystem based management approach when coordinating with other stakeholders, direct effort to enhance project results and their sustainability over the long-term.

## 6. Way Forward

- **Project Management Structure:** The establishment of the Project Board and the National Technical Advisory Committee (NTAC) is a priority of the Project Implementation Unit. State governments are encouraged to prioritize establishment of their respective Technical Advisory Committees (TACs). The roles of these groups will support implementation rather than micro-managing implementation, as discussed during the Inception Workshop. Hence, maintaining good communications and relations with important groups (such as Project Board and Technical Advisory Committees) is vital to project success.
- **Budget Management:** The PIU should to maintain close tabs on the project's finances by managing state budgets and allocating funds for monitoring and oversight activities. Such activities include State visits, consultations with national stakeholders and workshops.
- **Project Board:** The PIU will facilitate the inclusion of the following departments and units as part of the board: Department of Finance, Department of Justice, Department of Resources and Development (R&D), and the Overseas Development Assistance Unit. This process requires endorsement by the Office of the President.
- **Recruitment of National SLM and PA Coordinators:** The PIU is encouraged to prioritize the recruitment of these two officers by February 2017.
- **Project Implementation Unit to Maintain Close Tabs on Budgets:** The Project Implementation Unit is encouraged to manage state budgets as well as allocating funds for monitoring and oversight through State visits, consultations with national stakeholders and workshops.

## 7. Evaluation of Inception Workshop



At the end of the last session, five questions were raised and participants were asked to write down their responses in provided sheets of paper:

Q1. Do you have a better understanding of the R2R project? All respondents indicated better understanding of the R2R project.

Q2. How did your group incorporate the Micronesia Challenge gaps into your state draft FY17 work plans? 64% of respondents indicated that their group considered the presented MC gaps in state work plans.

Q3. What prioritized activities can be carried out this quarter? Activities suggested include: PAN awareness across states, develop protocol for SLM and PA management, to streamline existing plans/strategies to ILMPs, pilot activities in rehabilitation and restoration of terrestrial areas and dry litter piggery.

Q4. Do you have a better understanding of other resources/partners available to complement your R2R activities? All respondents wrote yes to being better informed on available technical resources in the region, other funding (e.g. GCF) to support activities.

Q5. Please rate the organization of this workshop. On a scale of 1 – 10 (10 being “effective” and 0 being “not achieving the objectives”). 11% of respondents rated from 0-5; 27% of participants rated 6-8 points whilst majority (62%) rated it as most effective organization of Inception Workshop program which enabled stakeholders to have a better understanding of the R2R project.

## 8. Lessons Learned

- The Inception Workshop tasked stakeholders with the proposal of activities to begin the development process of the AWP. Majority of the participants were newly introduced to the project, hence, a lot of discussions and group work were focused on ensuring state representatives fully understood the project outputs and expected outcomes to ensure activities were in line with the project.
- Since the development of the project proposal in 2011 and the project document’s final approval in 2015, priorities have changed which contributed to the challenges in identifying activities for the AWP.
- Having the support of a technical adviser and four State Coordinators to prepare for the Inception Workshop was highly valuable to the PIU. Although one week was granted to prepare for the workshop, everyone’s collaborative efforts contributed to the workshop’s success.
- FSM’s unique set up of five governments (States and National) led the work plan development process to focusing on drafting individual work plans and getting stakeholders to linking activities at State level to the National Project.

## 9. National Workshop Closure

The Inception Workshop was officially closed by the Assistant Secretary for the Division of Resources and Development, Ms. Alissa Takesy. The Assistant Director of the Division of Environment, Ms. Cynthia H. Ehmes also thanked State participants for the two days of discussion and planning of R2R activities in 2017.



Floyd Robinson of UNDP office in Suva stresses a point during session on Management Arrangements.



**OFFICE OF ENVIRONMENT & EMERGENCY MANAGEMENT**

PO BOX PS-69

Palikir, Pohnpei 96941 Phone: (691) 320-8815

Fax: (691) 320-8936

**R2R Inception Workshop Program**

**Governor's Conference Room, Pohnpei State Offices, Peilapalap, Kolonia**

**25<sup>th</sup> – 26<sup>th</sup> October, 2016**

This workshop aims to introduce future plan of the R2R Project and share the project planning activities with state actors and relevant ministries. The workshop will be presided by the Office of Environment & Emergency Management, with the participation of some state and national officials Department of Resources & Development and NGO stakeholders from The Nature Conservancy and The Micronesia Conservation Trust.

Through funding from GEF, the R2R project is designed to engineer a paradigm shift towards management of natural resources with an ecosystem-based management "ridge to reef", R2R approach guided by planning and evidence-based management process. Two outcomes are envisaged in this R2R project (1) Integrated ecosystems management and rehabilitation on the high islands of the FSM to enhance ridge to reef connectivity (2) Management effectiveness enhanced within new and existing PAs on the high islands of FSM as part of the R2R approach (both marine and terrestrial).

**Key objectives of the workshop:**

- Introduce the « Ridge to Reef » Project in FSM to state and national stakeholders and setting the context for the work to be done;
- Understand the current setting under which identified stakeholders will work under and expectations of the R2R Project for the four states ;
- Based on the *project results framework* and relevant *GEF Tracking Tool*, review and agree on the indicators, targets, means of verification plus recheck on assumptions made on risks;
- Discuss the roles, functions and responsibilities within the project organization structure including reporting, communication and conflict resolution mechanisms.

DAY 1: Tuesday, 25 October 2016	
Proposed time	Description of session
09:00-09:15 hrs	<b>Registration</b> Participants to sign the registration sheet.
	<b>Prayer</b> <b>Opening remarks by:</b> <b>Ice-breaker</b> <b>Overview of Workshop Program</b> R2R Project manager, Ms. Rosalinda Yatilman What are your expectations? Setting ground rules for the workshop - Kriskitina
	<b>Session 1: Introduction to the project</b> <b>Presentation by:</b>

	<ul style="list-style-type: none"> <li>• <b>Ms. Rosalinda Yatilman</b>, FSM R2R Project manager</li> </ul> <p>This session will cover the state of the environment for FSM setting the backdrop for this R2R project: goal &amp; objectives, outcomes with listing of original outputs on “Implementing an integrated ‘Ridge to Reef’ approach to enhance ecosystem services, to conserve globally important biodiversity and to sustain local livelihoods in the FSM”.</p> <p>What are the key changes since last, during PPG ☺</p> <p>Expectations of PIU about this inception workshop.</p> <p><u>Activity #1:</u></p> <p>Stakeholder analysis to determine level of involvement in the activities at both the national and state level through participation in the research and review process, as well as the outcomes that will assist future planning across PA management, biodiversity conservation and related sectors.</p> <p><b>Q &amp; A and discussion</b></p>
10:00-10:15 hrs	<p>Coffee break ☺</p> <p>Group Photograph</p>
10:15 – 10:45 hrs	<p><b><u>Session 2: Lessons from the Micronesia Challenge</u></b></p> <ul style="list-style-type: none"> <li>• The Micronesia Conservation Trust</li> </ul> <p><b>Q &amp; A and discussion</b></p>
10:45 – 11:45hrs	<p><b><u>Session 3: State case studies</u></b></p> <p>This session is about strengthening of local government departments’ capacities for planning, monitoring and implementation of sustainable environmental management, climate change adaptation and disaster risk management. In order to promote a deeper understanding about the potential for inter-sectoral collaboration and effective implementation, R2R project will promote an integrated approach towards fostering sustainable land management and biodiversity conservation.</p> <p>Sectoral experts will be invited to make a brief presentation (of not more than 15 minutes) that outlines key lessons and challenges of implementing their project activities; identifies other activities, policies and plans relating to and informing the R2R project in FSM. Describing their project experience that have actively promoted inter-sectoral coordination and cooperation.</p> <p>Presentations by the 4 State representatives on current activities:</p> <ol style="list-style-type: none"> <li>1. Yap Dept of Resource and Development</li> <li>2. Kosrae Island Resource Management Authority</li> </ol> <p><u>Activity #2</u> (optional):</p> <p>ICE-BREAKER after first 2 presenters</p> <ol style="list-style-type: none"> <li>3. Phonpei EPA</li> <li>4. Chuuk EPA</li> </ol> <p><b>Q &amp; A and discussion</b></p>

12:00 – 13:00 hrs	Lunch Break
13:30 – 15:00 hrs	<p><b>Session 4: Brainstorming</b> (group work)</p> <p>This session is aimed at providing an opportunity for stakeholders to review, refine and update what was in the log-frame of activities according to current situation at the national and individual state levels. With identified gaps from Micronesia Challenge discussion will focus on incorporating those activities as build on to the listed outputs in R2R results framework.</p> <p><u>Activity #3:</u> In two groups: printed sheets <i>per Outcome</i> is posted for each group that will focus their discussions on that set of output activities. Group presentation (15 minutes per group)</p> <p><b>Q &amp; A and discussion</b></p>
15:00 – 15:15 hrs	Coffee break ☺
15:15 -17:00 hrs	<p><b>Session 5: Work-planning</b></p> <p>In 4 groups (by State) complete the draft Annual work-plan in flipchart.</p> <p><u>Activity #4:</u> ICE-BREAKER – <i>Fresh eyes</i></p> <p>All groups have a chance to cite other states’ work-plan for comments.</p>
DAY 2: Wednesday, 26 October 2016	
09:00-09:15 hrs	<p><b>Registration by participants</b></p> <p>Prayer</p>
09:15-9:55 hrs 10 mins per State	<p><b>RECAP by:</b> State coordinators</p> <p>This session will provide an overview of the FY1 work-plan based on discussion results of Session 4-5. Members of the 4 groups are asked to confirm that the listed activities were discussed and agreed on.</p>
09:55 – 10:30 hrs	<p><b>Session 6: R2R connect with others</b></p> <p>This session will involve other organisations based in FSM including NGOs and academic institutions that will participate in the activity as well as learn from its outcomes.</p> <ul style="list-style-type: none"> <li>• The Nature Conservancy</li> <li>• Global Climate Facility [Mr Kensley Ikosia/Ms Belinda Hadley]</li> </ul> <p><b>Q &amp; A and discussion</b></p>
10:30-10:45 hrs	Coffee break ☺
10:45 -11:15 hrs	<p><b>Session 7: Management arrangements</b></p> <p>R2R Project Implementation Unit (PIU)</p> <p>This session will discuss the roles, functions and responsibilities within the R2R project structure i.e. Project Board, Project Steering Committee</p>

	<p>including each ToR: reporting, communication lines and conflict resolution mechanisms.</p> <p><u>Activity #5</u> (optional):</p> <p>Role play about roles and responsibilities. In groups of 4-6 participants they will agree to enact a number of scenarios according to situation cards presented per group.</p> <p><b>Q &amp; A and discussion</b></p>
11:15 -12:15 hrs	<p><b><u>Session 8: Monitoring framework and evaluation</u></b></p> <p>This session by UNDP will provide an overview of the principles of M&amp;E and improve understanding about implementation of R2R in FSM. The project will be monitored according to the log-frame of activities.</p>
12:15 -13:00 hrs	Lunch Break
13:00 – 14:30 hrs	<p><b><u>Session 9: Reporting @ State level</u></b></p> <p>R2R Project Implementation Unit (PIU) /UNDP</p> <p>Understanding session about the value of Monitoring, Evaluation and reporting results. Based on the <i>project results framework</i> and relevant <i>GEF Tracking Tool</i>, review and agree on the indicators, targets, means of verification plus recheck on assumptions made on risks, State participants are asked to provide input.</p> <p><u>Activity #6:</u></p> <p>In groups: Discuss with State participants the draft monitoring (quarterly) reporting template.</p>
	<p><b><u>Session 10: Sum up</u></b></p> <p>.</p> <p>Pohnpei State Coordinator, Mr Jorg Anson to give the thank you note.</p>
15:15 -16:00 hrs	<p><b>Evaluation (participatory)</b></p> <p><b>Workshop Ends</b></p>
18:00hrs	<p><b>Cocktail event @ Oceanview Hotel</b></p> <p><b>Closing remarks by:</b></p>

## Attendance list of participants:

25TH - 26TH October, 2016				
NAME	ORGANIZATION	EMAIL	M	F
1. Patterson Shed	Small Grants Programme	<a href="mailto:pattersons@unep.org">pattersons@unep.org</a>	X	
2. Lisa Farroway	UNDP	<a href="mailto:lisa.farroway@undp.org">lisa.farroway@undp.org</a>		X
3. Luisa Katonibau	UNDP	<a href="mailto:luisa.katonibau@undp.org">luisa.katonibau@undp.org</a>		X
4. Simpson Abraham	SPREP	<a href="mailto:simpsona@sprep.org">simpsona@sprep.org</a>	X	
5. Shaun Suliol	COM-FSM	<a href="mailto:suliols@comfsm.fm">suliols@comfsm.fm</a>	X	
6. Monifa Fiu	ITA-UNDP	<a href="mailto:monifafiu@gmail.com">monifafiu@gmail.com</a>		X
7. Patrick Blank	Micronesian Productions	<a href="mailto:p-blank@hotmail.com">p-blank@hotmail.com</a>	X	
8. Vanessa Fread	RARE Micronesia	<a href="mailto:vfread@rare.org">vfread@rare.org</a>		X
9. Chiara Franco	TNC	<a href="mailto:chiara.franco@tnc.org">chiara.franco@tnc.org</a>		X
10. Yolanda Elanzo	RMI-MIMRA			X
11. Konrad Englberger	Private Consultant	<a href="mailto:ppmicronesai@mail.fm">ppmicronesai@mail.fm</a>	X	
12. Evelyn Adolph	UNJPI	<a href="mailto:adolph@unfpa.org">adolph@unfpa.org</a>		X
13. Floyd Robinson	UNDP	<a href="mailto:floyd.robinson@undp.org">floyd.robinson@undp.org</a>	X	
14. JoLynne Gallen	MCT	<a href="mailto:grants@ourmicronesia.org">grants@ourmicronesia.org</a>		X
15. Shirley Ann Pelep	MCT	<a href="mailto:grants@ourmicronesia.org">grants@ourmicronesia.org</a>		X
16. Jasmine Mendiola	MERIP	<a href="mailto:jmendiola28@gmail.com">jmendiola28@gmail.com</a>		X
17. Jackson Phillip	COM-FSM CRE	<a href="mailto:jphillip1127@gmail.com">jphillip1127@gmail.com</a>	X	
18. Tilson Kephass	OLUM Watershed-Kosrae	<a href="mailto:tilson.kephas@yahoo.com">tilson.kephas@yahoo.com</a>	X	
19. Blair Charley	R2R-Kosrae	<a href="mailto:charleyblair@gmail.com">charleyblair@gmail.com</a>	X	
20. Salpasr Tilfas	Kosrae State Legislature	<a href="mailto:saltifas@gmail.com">saltifas@gmail.com</a>	X	
21. Andy George	KCSO-Kosrae	<a href="mailto:kcsodirector@mail.fm">kcsodirector@mail.fm</a>	X	
22. Robert H. Jackson	KIRMA	<a href="mailto:rhjackson14@gmail.com">rhjackson14@gmail.com</a>	X	
23. Presley Abraham	KIRMA	<a href="mailto:kjpal@gmail.com">kjpal@gmail.com</a>	X	
24. Stanley Raffilman	DREA-Kosrae	<a href="mailto:sraffilman@investkosrae.fm">sraffilman@investkosrae.fm</a>	X	
25. Steven Palik	KIRMA	<a href="mailto:s.asupalik@gmail.com">s.asupalik@gmail.com</a>	X	
26. Lyndon Cornelius	DREA-Kosrae	<a href="mailto:lyndonc.drea@gmail.com">lyndonc.drea@gmail.com</a>	X	
27. Marcellus Akapito	CCS-Chuuk	<a href="mailto:markapito@gmail.com">markapito@gmail.com</a>	X	
28. Elina Raymond	EPA-Chuuk	<a href="mailto:elichuuk@gmail.com">elichuuk@gmail.com</a>		X
29. Ismael H. Mikel	EPA-Chuuk	<a href="mailto:ismael.chuukepa@gmail.com">ismael.chuukepa@gmail.com</a>	X	
30. Curtis Graham	Marine Resources-Chuuk	<a href="mailto:abcpenia@gmail.com">abcpenia@gmail.com</a>	X	
31. Wisney Nakayama	Chuuk State Legislature	<a href="mailto:wisneynakayama@gmail.com">wisneynakayama@gmail.com</a>	X	
32. Bradford Mori	EPA-Chuuk	<a href="mailto:brad_mori@hotmail.com">brad_mori@hotmail.com</a>	X	

33. Enjoy Rain	Marine Resources-Chuuk	<a href="mailto:atinwonranch@gmail">atinwonranch@gmail</a>	X	
34. Kriskitina Kanemoto	R2R-Chuuk	<a href="mailto:kirk66@gmail.com">kirk66@gmail.com</a>		X
35. James Y. Pong	MRMD-R&D-Yap	<a href="mailto:jayinug@yahoo.com">jayinug@yahoo.com</a>	X	
36. Raymond Tamow	R&D-Yap	<a href="mailto:rtamow@gmail.com">rtamow@gmail.com</a>	X	
37. Tamdad Sulog	Agriculture-R&D-Yap	<a href="mailto:agricultureyap@mail.fm">agricultureyap@mail.fm</a>	X	
38. Christina Fillmed	EPA-Yap	<a href="mailto:epayap@mail.fm">epayap@mail.fm</a>		X
39. Anthony Y. Lukagfinay	YAPCAP	<a href="mailto:yalon88@gmail.com">yalon88@gmail.com</a>	X	
40. Paul J. Ayin	Yap Fishing Authority	<a href="mailto:gm@yapfishingauthority.com">gm@yapfishingauthority.com</a>	X	
41. Debra Laan	R2R-Yap	<a href="mailto:debra.laan@gmail.com">debra.laan@gmail.com</a>		X
42. Wilmer Kilmete	DTC&I-FSMNG	<a href="mailto:wkilmete@yahoo.com">wkilmete@yahoo.com</a>	X	
43. Dave Mathias	DR&D-FSMNG	<a href="mailto:Dave.Mathias@fsmrd.fm">Dave.Mathias@fsmrd.fm</a>	X	
44. John P. Wichep	DR&D-FSMNG	<a href="mailto:jwichep@fsmrd.fm">jwichep@fsmrd.fm</a>	X	
45. Alissa Takesy	DR&D-FSMNG	<a href="mailto:alissa.takesy@fsmrd.fm">alissa.takesy@fsmrd.fm</a>		X
46. Stacy Yleizah	DFA-FSMNG	<a href="mailto:syleizah@gmail.com">syleizah@gmail.com</a>		X
47. Patti Pedrus	OEEM-FSMNG	<a href="mailto:pattiwarm@gmail.com">pattiwarm@gmail.com</a>		X
48. Santiago Joab, Jr.	OEEM-FSMNG	<a href="mailto:sjoabjr@gmail.com">sjoabjr@gmail.com</a>	X	
49. Alice B. Ehmes	R2R-FSMNG	<a href="mailto:aliceehmes@gmail.com">aliceehmes@gmail.com</a>		X
50. Gillian Doone	ODA-FSMNG	<a href="mailto:gdoone@sbc.fm">gdoone@sbc.fm</a>	X	
51. Cynthia H. Ehmes	OEEM-FSMNG	<a href="mailto:climate@gmail.com">climate@gmail.com</a>		X
52. Lorna S. Johnny	OEEM-FSMNG	<a href="mailto:lornajohnny@gmail.com">lornajohnny@gmail.com</a>		X
53. Jorg Anson	R2R-Pohnpei	<a href="mailto:jorgyanson@gmail.com">jorgyanson@gmail.com</a>	X	
54. Francisco Celestine	EPA-Pohnpei	<a href="mailto:franciscocelentine@gmail.com">franciscocelentine@gmail.com</a>	X	
55. Henry Susaia	EPA-Pohnpei	<a href="mailto:hsusaia@gmail.com">hsusaia@gmail.com</a>	X	
56. Lululeen Santos	Social Affairs-Pohnpei	<a href="mailto:lululeensantos@yahoo.com">lululeensantos@yahoo.com</a>		X
57. Adelino Lorens	OEA-Agriculture-Pohnpei	<a href="mailto:pniagriculture@mail.fm">pniagriculture@mail.fm</a>	X	
58. Delson Luke	OEA-Agriculture-Pohnpei	<a href="mailto:delluke@outlook.com">delluke@outlook.com</a>	X	
59. Saimon Lihpai	OEA-Forestry-Pohnpei	<a href="mailto:saimonlihpai@rocketmail.com">saimonlihpai@rocketmail.com</a>	X	
60. Donna Scheuring	EPA-Pohnpei	<a href="mailto:pohnpei.epa@gmail.com">pohnpei.epa@gmail.com</a>		X
61. Mike Chipen	PNIMMA Network	<a href="mailto:chipenm@yahoo.com">chipenm@yahoo.com</a>	X	
62. Keper Joel	DFW-Pohnpei	<a href="mailto:keperjoel49@gmail.com">keperjoel49@gmail.com</a>	X	
63. Roseo Marquez	MCT	<a href="mailto:sgo@ourmicronesia.org">sgo@ourmicronesia.org</a>	X	
64. Ricky Carl	TNC	<a href="mailto:rcarl@tnc.org">rcarl@tnc.org</a>	X	
65. Eugene Joseph	CSP	<a href="mailto:cspdirector@serehd.org">cspdirector@serehd.org</a>	X	
66. Lisa Andon	MCT	<a href="mailto:deputy@ourmicronesia.org">deputy@ourmicronesia.org</a>		X
67. Rosalinda Yatilman	R2R-FSMNG	<a href="mailto:ryatilman@gmail.com">ryatilman@gmail.com</a>		X



## Project Strategic Results Framework:

<b>This project will contribute to achieving the following Sub-regional Programme Document for the Pacific Island Countries and Territories (SRPD) Outcome:</b> Improved resilience of PICTs, with a particular focus on communities, through the integrated implementation of sustainable environmental management, climate change adaptation and/or mitigation and disaster risk management					
<b>SRPD Outcome Indicators:</b> 1. Capacities of local government departments are strengthened for effective, participatory environmental governance. 2. Demonstration projects on natural resources management and biodiversity at the community level that can be scaled up are implemented, and the formulation of evidence-based policies is supported.					
<b>Country Programme Outcome Indicators:</b> <i>Area of terrestrial and marine ecosystems under improved management or heightened conservation status increased by 50 per cent by end of 2016</i>					
<b>UNDP Strategic Plan Primary Outcome:</b> (From UNDP Strategic Plan 2014-2017) Outcome 1: Growth and development are inclusive and sustainable, incorporating productive capacities that create employment and livelihoods for the poor and excluded.					
<b>Applicable GEF Strategic Objective and Program:</b> <i>BD1 Improve the sustainability of Protected Area Systems</i> <i>LD3 Reduce pressures on natural resources from competing land uses in the wider landscape</i> <i>IW1 Catalyse multi-state cooperation to balance conflicting water users in trans-boundary surface and groundwater basins while considering climate variability and change</i>					
<b>Applicable GEF Expected Outcomes:</b> <i>BD1.1 Improved management of existing and new protected areas</i> <i>LD3.2 Integrated landscape management practices adopted by local communities</i> <i>IW1.3 Innovative solutions implemented for reduced pollution, improved water use efficiency, sustainable fisheries with right-based management, IWRM, water supply protection in SIDS, and aquifer and catchment protection</i>					
<b>Applicable GEF Outcome Indicators:</b> <i>BD1.1 Protected area management effectiveness score as recorded by Management Effectiveness Tracking Tool: Average METT score for 27 existing and 13 new PAs (40 total) increased by an average of 10%</i> <i>LD3.2 Application of integrated natural resource management (INRM) practices in wider landscapes: ILMPs developed and implemented for 4 pilot sites (1 in each State) in the FSM.</i> <i>IW1.3 Measurable water related results from local demonstrations: 5 % of piggeries in each state practicing dry litter system</i>					
	INDICATOR	BASELINE	END OF PROJECT TARGETS	SOURCE OF INFORMATION	RISKS AND ASSUMPTIONS
<b>Project Objective</b> To strengthen local, State and National capacities and actions to implement integrated	Area of High Islands of the FSM where pressures from competing land uses are reduced (measured by no net loss of intact forests) through the implementation	0 ha  Area of intact forest within the High Islands to be established in Year 1	62,133 ha  No net loss of intact forest against the baseline	Project Reports  Municipal and State Congress documentation ratifying the ILMPs	<b>Assumptions:</b> Government remains committed to investing in SLM & biodiversity conservation and give their full support to implementing the

ecosystem based management through “ridge to reef” approach on the High Islands of the four States of the FSM	of Integrated Landscape Management Plans				ILMPs and establishing the PAs
	Average of METT Scores for 40 target PAs covering 24,986 ha	55%	65% with no drop in scores in any of the individual PAs	Project review of the METT Scorecards	Stakeholder institutions are engaged by the project and engage constructively in project activities.
	Sustainable Land Management Capacity Development Score for FSM	50%	70%	Project review of SLM Capacity Development Scorecard	Government is committed to working with all stakeholders both nationally and in the region.
	PA Management Capacity Development Score for FSM	55%	75%	Project review of PA Capacity Development Scorecard	<b>Risks:</b>
	% of the FSM population benefitting in the long-term from the sustainable management of the fisheries resource which includes providing adequate refugia for sustaining the resource	0%	20% <sup>1</sup>	Marine PAs established and adequately managed	Mainstreaming SLM and biodiversity conservation into landscape-level development plans and other existing frameworks hindered by competing government/social priorities.  The effects of climate change degrade conservation value of ecosystems and PAs.  Poor resilience of ecosystems and species to the effects of invasive species and climate change.

<sup>1</sup> Estimated % of the population that are currently (2014) fishers. Fisheries data from Pohnpei as an illustrative example of the number of people that depend on fisheries in and around Pohnpei’s marine protected areas. Pohnpei is one of four island states in the FSM, with a population of around 35,000 individuals and approximately 6,000 households. Of these, more than 63 percent of households contain at least one fisher (for a total of 7,227 fishers). These fishers constitute more than 20 percent of the total population. Of this population of fishers, 2,976 are commercial/artisanal and 4,251 are subsistence coral reef fishers (source – Micronesia Challenge biological monitoring/Dr. Kevin Rhodes). While this data is for Pohnpei, the other three states have a similar profile for fishers. It is not unreasonable to extrapolate from this that approximately 20% of the population of the FSM are fishers.

					Extreme climatic events result in catastrophic loss of ecosystems (e.g. landslides, coastal flooding/erosion)
<b>Outcome 1:</b>  Integrated Ecosystems Management and Rehabilitation on the High Islands of the FSM to enhance Ridge to Reef Connectivity	<b>Outputs:</b>				
	1.1 Four Integrated Landscape Management Plans (ILMPs), each covering the High Islands of FSM, are developed and implemented for the High Islands of the FSM:				
	1.2 Institutions with sectoral responsibilities for the development and conservation of the High Islands, together with relevant CSOs and community partners, are capacitated for coordinated action at the wider landscapes on SLM				
	1.3 Additional finances for SLM investments (including PA management costs) secured and existing contributions to the environmental sector to support SLM practices aligned.				
1.4 Management and rehabilitation of critical ecosystems implemented to enhance functional connectivity, reduce erosion, improve water quantity and quality and reduce coastal flooding.					
Number of Integrated Landscape Management Plans being implemented	0 ILMPs being implemented	4 ILMPs being implemented (1 per State)	Project Reports Municipal and State Congress documentation ratifying the ILMPs	<b>Assumptions:</b> The National and State governments allocate adequate resources (staff and budget) to fulfil their roles in PAN implementation, SLM and information management.  Identified role players and stakeholders engage constructively with respect to PAN implementation, SLM and capacity building.  <b>Risks:</b> ILMPs developed but not implemented by regulatory authorities.  Catastrophic climatic events reverse	
Enhanced cross-sector enabling environment for integrated landscape management as per PMAT score:  (i) Framework strengthening INRM  (ii) Capacity strengthening	(i) Score 2 – INRM framework has been discussed and formally proposed  (ii) Score 2 – Initial awareness raised (e.g. workshops, seminars)	(i) Score 4 – INRM framework has been formally adopted by stakeholders but weak  (ii) Score 4 – Knowledge effectively transferred (e.g. working groups tackle cross-sectoral issues)	Project review of PMAT		
Annual Government and Donor funding allocated to SLM (including PA management costs)	US\$ 9.2 million	At least US\$ 10.1 million	Annual National, State and NGO budget allocations		

	Extent (ha) of ecosystems rehabilitated resulting in increased delivery of ecosystem and development benefits:  (i) Upland forests (ii) Mangroves & wetlands	(i) 0 hectares  (ii) 0 hectares	(i) 350 hectares  (ii) 50 hectares	Project reports	progress made with rehabilitation
	% of piggeries using the dry litter piggery system within the Ipwek, Dachangar, Finkol, and Nefounimas catchments resulting in increased water quality <sup>2</sup>	0%	100%	Project reports	
<b>Outcome 2:</b>  Management Effectiveness enhanced within new and existing PAs on the High Islands of FSM as part of the R2R approach (both marine and terrestrial)	<b>Outputs:</b>  2.1 A National and State-level Legal and Institutional Framework have been established to improve management effectiveness of PA's. 2.2 The PAN of the High Islands has been expanded, and existing and new PAs of the have been secured through a review and upgrading of legal protection status (gazetting of all PAs). 2.3 Management authorities (state and community) of newly established PAs are equipped and capacitated in managing PAs. 2.4 Effective PA management practices have been adopted in existing and new PAs.				
	Coverage (ha) of statutory PAs in the High Islands  (i) PAs gazette status verified  (ii) Marine  (iii) Terrestrial  (iv) Total	(i) Legal status of 0 (0 ha) PAs verified  (ii) 3,154 ha  (iii) 4,444 ha  (iv) 7,598 ha	(i) Legal status of 40 PAs verified - 27 existing and 13 new gazette  (ii) 14,953ha  (iii) 12,192ha  (iv) 27,145ha	Project reports  National PAN register  State Congress PA proclamations	<b>Assumptions:</b>  The National and State governments allocate adequate resources (staff and budget) to fulfil their roles in PAN implementation, SLM and information management.

<sup>2</sup> Increase water quality (as well as other assets) as a result of the introduction of dry litter piggery system is confirmed by Fischer, R.D. 2010. Inoculated Deep Litter System. United States Department of Agriculture: "Because it does not rely on wash downs to move the waste out of the pen and subsequently to a stream or lagoon, the dry litter waste management system eliminates one of the major potential sources of contaminated runoff on the farm. Other attractive benefits: lower water bills and labor costs to the farm because pen washig is virtually eliminated. The dry litter waste management facility produced 10.7 parts per billion hydrogen sulfide levels and 5.0 parts per billion in the production and storage area. The control or conventional wash-down facility had measurements of 54.3 parts per billion and an average of 104.5 parts per billion at the effluent entry to the waste lagoon."

	Number of States having a fully operational PA management decision support system in place on which management decisions are based	0	4	Project Reports  Management actions	Identified role players and stakeholders engage constructively with respect to PAN implementation, SLM and capacity building.  <b>Risks:</b> Recommendations from the SEA and ILMP not integrated into PA management plans.  Recommended State-level PA law reform not enacted by State governments.  National and State role players cannot agree on their respective roles in PAN implementation, management, monitoring and enforcement.
	Mean % of total fish biomass of (i) <i>Cheilinus undulates</i> (EN); and (ii) <i>Bolbometopon muricatum</i> (VU) across the States <sup>3</sup>	Chuuk: (i) 1.14% (ii) 0.22% Kosrae: (i) 1.52% (ii) 0.00% Pohnpei: (i) 5.2% (ii) 0.48% Yap: (i) 2.47% (ii) 4.70%	Stable or increasing mean % against baseline at each State	PA monitoring results  Project reports	
	Mean Detection Rate <sup>4</sup> of the following birds:  (i) <u>Kosrae</u> : <i>Zosterops cinereus</i> (Kosrae	(i) 1,846 <sup>5</sup> (Baseline to be verified in year 1 of project) (ii) 0.7936 <sup>6</sup>	Stable or increasing against baseline	PA monitoring results  Project reports	

<sup>3</sup> Methodology and sample sites should be similar to those used by Peter Houk, Unpublished data from FSM Coral Monitoring Programs, University of Guam.

<sup>4</sup> Mean Detection Rates should be established using similar methodology to Oleiro, P.C. (2014) *Avian Population Responses to Anthropogenic Landscapes Changes in Pohnpei, Federated States of Micronesia*. MSc Thesis, University of Missouri; or, Engbring, J., Ramsey, F.L. and Wildman, V.J. (1990) Micronesian forest bird surveys, the federated states: Pohnpei, Kosrae, Chuuk, and Yap. U. S. Fish & Wildlife Service, Honolulu, Hawaii.

<sup>5</sup> Densities (Individuals / Km<sup>2</sup>) of bird species in mangroves and along an elevation gradient in tropical rainforest of Kosrae in July 1983 (Engbring et al., 1990) reported in Hayes, F.E. and Pratt, H.D. (unpublished manuscript) The Avifauna of Kosrae, Federated States of Micronesia, with Taxonomic Revisions of Endemic Taxa. Mean density calculated excluding the Mangrove habitats:

Species Name	Common Name	Mangroves	0-100m	100-200m	200-400m	400-600m	600-800m	MEAN
<i>Zosterops cinereus</i>	Kosrae White-eye	1,098	2,062	2,000	1,897	1,350	1,981	1,846

<sup>6</sup> Oleiro, P.C. (2014) *Avian Population Responses to Anthropogenic Landscapes Changes in Pohnpei, Federated States of Micronesia*. MSc Thesis, University of Missouri. Species detection rates (birds detected/8 minutes) observed in 2012 on the island of Pohnpei, FSM at six elevation zones. Mean Detection Rate calculated excluding the Mangrove habitats:

Species Name	Common Name	Mangrove	0-100m	100-200m	200-400m	400-600m	600-800m	MEAN
Myigra pluto	Pohnpei flycatcher	0.468	0.851	0.781	0.837	0.762	0.737	0.7936

	<p>White-eye) Endemic</p> <p>(ii) <u>Pohnpei</u>: <i>Myiagra pluto</i></p> <p>(Pohnpei Flycatcher) Endemic</p> <p>(iii) <u>Chuuk</u>: <i>Metabolus rugensis</i></p> <p>(Truk Monarch) Endangered</p> <p>(iv) <u>Yap</u>: <i>Monarcha godeffroyi</i></p> <p>(Yap Monarch) Endemic</p> <p>(v) <u>All States</u>: <i>Ducula oceanica</i> (Micronesian Pigeon) Regionally endemic</p>	(iii) – (v) Baseline TBD in year 1 of project			Poor resilience of marine and terrestrial ecosystems and species to the effects of climate change and IAS
--	---	--	--	--	---

## Annex 4: List of PAs updated

State	Name of Protected Area (PA)	Terrestrial or Marine	Area (ha)	PA Status
Chuuk	Oror (Fefen)	Terrestrial	35	Existing
	Ununo (UFO, Fefen)	Terrestrial	160	Existing
	Mwanukun and Neoch	Marine	10583	New
	Wichukuno (Tol)	Marine	706	New
	Winifurer	Terrestrial	231	New
	Winipot (Tol)	Terrestrial	193	New
	Witipon	Terrestrial	2161	New
	Parem	Marine	72	Existing

State	Name of Protected Area (PA)	Terrestrial or Marine	Area (ha)	PA Status
Kosrae	Awane Marine Park (make sure Yenyen is recognised in Awane MPA)	Marine	131	Existing
	Tafunsak Marine Park*	Marine	59	Existing
	Trochus Sanctuary (Salem)	Marine	278	Existing
	Utwe Biosphere Reserve*(buffer to be included)	Marine	131	Existing
	Yela Conservation Area	Terrestrial	520	Existing
	Pikensukar Marine Protected Area	Marine	20	New
	Malem Watershed (Olum)*	Terrestrial	310	Existing
	Walung Marine Protected Area	Marine	150	Existing
	Kuplu Marine Protected Area	Marine	45	New
	Tofol Watershed	Terrestrial	306	Existing

\*To be confirmed.

State	Name of Protected Area (PA)	Terrestrial or Marine	Area (ha)	PA Status
Pohnpei	Dehpehk/Takaieu	Marine	212	Existing
	Kehpara	Marine	189	Existing
	Mwand (Dekehos)	Marine	460	Existing
	Nahtik	Marine	75	Existing
	Namwen Na	Marine	71	Existing

Namwen Naningih	Marine	34	Existing
Nanwap	Marine	305	Existing
Pwudoi	Marine	139	Existing
Sapwitik	Marine	83	Existing
Enipein Mangrove Reserve	Terrestrial	955	Existing
Pohnpei Watershed Forest Reserve (Phase I)	Terrestrial	2330	Existing
Senpehn Mangrove Reserve	Terrestrial	130	Existing
Palikir Pass*	Marine	180	New
Peniou Island <sup>Δ</sup>	Marine	160	New
Awak Watershed Basin <sup>Δ</sup>	Terrestrial	800	New
Pohnpei Watershed Forest Reserve (Phase II) **	Terrestrial	4012	New

\*Recently passed by Pohnpei State Legislature (newest PA on PNI).

<sup>Δ</sup> Site proposed but has not been passed by the Pohnpei State Legislature.

\*\*The PNI Watershed Forest Reserve is captured in Pohnpei Watershed Forest Reserve and Mangrove Protection Act of 1987. Delineation of boundaries is incomplete.

Yap Protected Area Stocktake April 2014					
Name	Marine Protected Areas		Size in ha	Gazetted	Easement
	Ownership	Guidelines for Management			
1. Riken Protected Area	Community	Community Fisheries Mang't Plan	34.825	no	n/a
2. Ngulu Atoll Marine Managed Area	Community	Management Plan	92,818	no	n/a
3. Riy & Gaqnaun Marine Protected Area	Community	Community Fisheries Mang't Plan	307.29	no	n/a
4. Bulwol Marine Protected Area	Community	Community Fisheries Mang't Plan	90.94	no	n/a
5. Nimpal Conservation Area	Community	Management Plan	79.36	no	n/a
6. Wacholab Marine Protected Area-1	Community	Meetings/Tradition	63.28	no	n/a
7. Wacholab Marine Protected Area-2	Community	Meetings/Tradition	100.98	no	n/a
8. Reey Marine Protected Area	Community	Management Plan	117.09	no	n/a



9. Tomil Resource Conservation Trust	Community	Management Plan	1,601	no	n/a
10. Balabat Marine Conservation Program	Community	Meetings/Tradition	138.72	no	n/a
11. West Fanif Marine Conservation Area	Community	Community Fisheries Mang't Plan	360	no	n/a
12. Ulithi Locally Marine Managed Area	Community	Meetings/Tradition	195.53	no	na
<b>Terrestrial Protected Areas</b>					
<b>Name</b>	<b>Ownership</b>	<b>Guidelines for Management</b>	<b>Size in ha</b>	<b>Gazetted</b>	<b>Easement</b>
1. Ngulu Atoll Conservation Area	Community	Management Plan	27.77	no	n/a
2. Tamilyog Stone Trail	Community	Meetings/Tradition	28.32	no	n/a
3. Tomil Resource Conservation Trust	Community	Management Plan	1,400	no	n/a
4. Luwech & Lamear Reforestation Program	Community	Meetings/Tradition	68.79	no	n/a
5. Gargey Fatearcheg Traditional Timber Land	Community	Meetings/Tradition	1.6	no	n/a
6. Weloy Forestry Stewardship Plan	Community	Meetings/Tradition	92.5	no	n/a
<b>Mangrove Protected Areas</b>					
7. Kaday & Okaw Mangrove Protected Site	Community	Meetings/Tradition	18.59	no	n/a
8. Tomil Maa Mangrove Protected Area	Community	Meetings/Tradition	14.16	no	n/a
9. Kanif Mangrove Reserve	Community	Meetings/Tradition	2.2	no	n/a
10. Punguybug Mangrove Protected Area (to be confirmed)	Community	Meetings/Tradition	8.7	no	n/a
11. Gargey Tolo' Mangrove Locally Managed Area	Community	Meetings/Tradition	2.1	no	n/a

## 2017 Annual Work Plan (AWP):

<b>Integrated Ecosystems Management and Rehabilitation on the High Islands of the FSM to enhance Ridge to Reef Connectivity</b>					
<b>Expected Results</b>		<b>Project Implementation Unit (PIU)</b>		<b>Timeframe</b>	<b>Budget</b>
<i>Outcome 1: Enhanced cross-sector enabling environment for LLMP planning and increased delivery of ecosystem development benefits</i>		• <i>Engagement of PIU staff for project coordination, oversight and management (SLM component)</i>		<i>QTR 1-4</i>	<i>\$66,000.00</i>
		• <i>Participation of staff and consultants in State and National consultations and site visits</i>		<i>QTR 1-4</i>	<i>\$17,250.00</i>
		• <i>Training of PIU staff and other key stakeholders</i>		<i>QTR1-4</i>	<i>\$25,000.00</i>
		• <i>Development of Communications and Capacity Strategy (SLM)</i>		<i>QTR 1-4</i>	<i>\$5,000.00</i>
<b>Outputs</b>	<b>State</b>	<b>Activities</b>			
<b>1.1</b>	<i>Pohnpei</i>	1.1.1	Establish Pohnpei State SEA Team and begin planning sessions	QTR 1	\$500.00
		1.1.2	PNI SEA Team, in collaboration with SEA Specialist (spatial biodiversity planning experience), SLM National Coordinator and GIS Officer, conduct spatial data needs analysis	QTR 2	\$3,000.00
		1.1.3	Engage w/expert (Resource Managers, Scientists, and other experts) to complete SEA data gaps (linked activity 1.1.2)	QTR 4	\$10,000.00
	<i>Chuuk</i>	1.1.1	Formalize Technical Advisory Committee (TAC)	QTR 1	\$365.00
		1.1.4	Formalize Resource Managers Action Group	QTR 1	\$175.00
		1.1.5	Conduct State planning meeting to 1) develop better understanding of existing synergies with the R2R Program; and 2) Map out activities and seek endorsement from relevant stakeholders	QTR 1	\$13,150.00
		1.1.6	Compile and harmonize existing state plans/policies	QTR 2	\$150.00
		1.1.7	Hire Land use planning and SEA specialist	QTR 4	\$20,000.00
	<i>Kosrae</i>	1.1.1	Strategic Environmental Assessments (SEAs) conducted for High Islands	QTR 4	\$37,350.00
		1.1.2	Spatially-based decision support systems for INRM are developed and made available for use in EIA, policy development, multi-sector ecosystem-based planning & management	-	-
				QTR 4	1,000.00

		1.1.3 Coordinate with TAC to organize a multi-sector planning forum and support development of ILMP (linked to 1.1.1d)			
	<i>Yap</i>	1.1.1 Review all SLM activities and engage SEA technical consultant	QTR 4	\$35,000.00	
		1.1.2 Review and collate all information on SLM activities, related initiatives in Yap	QTR 4	\$4,000.00	
		1.1.3 Conduct a target setting (planning) workshop with project technical committee, SEA team and municipalities to identify site level SLM activities (rehabilitation of mangroves/upland forest/removal of invasive species)	QTR 4	\$5,000.00	
<b>1.2</b>	<i>Pohnpei</i>	1.2.1 Review SLM Capacity Needs of Stakeholders at State-level	QTR 2	\$500.00	
		1.2.2 Engage w/ National Project Manager to establish Communication and Capacity Development Strategy	QTR 3	\$100.00	
		1.2.3 Training on Dry Litter Piggery and other sustainable agriculture practices at communities adjacent to PA(s)/contaminated riverine systems	QTR 2	\$5,250.00	
		1.2.4 Awareness on identification and eradication of Invasive Species (iSTOP SAP-Review, update and print copies of the Invasive species booklet)	QTR 3	\$2,500.00	
		1.2.5 IWRM outreach with 12 communities (Sites selected based on EPA <i>E. coli</i> report) and 6 high schools (3 public/3 private) <b>Total 18</b>	QTR 3	\$3,600.00	
	<i>Chuuk</i>	1.2.1 Review SLM Capacity Needs of Stakeholders at State Level	QTR 1	18,000	
		1.2.2 Seek technical support from a regional crop agency for training of resource managers on SLM/compliance and enforcement	QTR 2	\$10,000.00	
		1.2.3 Develop a Communication Strategy for R2R Project Activities	QTR 1	\$5,000.00	
	<i>Kosrae</i>	1.2.1 Initiate the development of communications & needs based capacity building strategy with TAC	QTR 2	\$1,000.00	
		1.2.2 Collaborate with regional R2R and other regional NGOs, UNDP JPO including GEF SGP to align learning networks and capacity development programs	Ongoing	\$6,500.00	
		<i>Yap</i>	NO ACTIVITIES		
		<i>Pohnpei</i>	1.3.1 Initiate the development of TOR for Resource Economist	QTR 4	\$300.00

<b>1.3</b>	<i>Chuuk</i>	1.3.1 Stakeholders/leadership engagement to promote SLM (linked to activity 1.1.3)	QTR1	\$2,500.00
		1.3.2 Draft at least 2 SLM legislations drafted (linked to activity 1.3.1)	QTR3	\$1,500.00
	<i>Kosrae</i>	NO ACTIVITIES		
	<i>Yap</i>	NO ACTIVITIES		

<b>1.4</b>	<i>Pohnpei</i>	1.4.1 Develop Dry Litter Piggery (DLP) Selection Criteria (linked to activity 1.2.3)	QTR 1	\$200.00
		1.4.2 Construct 4 new DLPs at selected sites (linked to activity 1.4.5)	QTR 4	\$16,000.00
		1.4.3 Explore additional financing to support the construction of at least 10 new DLPs in selected communities (linked to activity 1.2.3)	QTR 2	\$300.00
		1.4.4 Conduct inspections and obtain GPS coordinates on illegal dumpsites on island	QTR 2	\$500.00
		1.4.5 Water quality sampling in three rivers or streams. (Selection of sites linked to activity 1.4.2)	QTR 4	\$5,000.00
		1.4.6. Review the inventory report on invasive species to inform plan for eradication	QTR 3	\$500.00
		1.4.7 Recruit PA Ranger for PA monitoring and enforcement activities	QTR 4	\$12,000.00
	<i>Chuuk</i>	1.4.1 Facilitate at least 2 community consultations with the identified rehabilitation sites (linked to activity 1.1.5)	QTR4	\$1,700.00
		1.4. 2 Develop a Tree Planting Campaign with State Stakeholders (linked to output 1)	QTR 3	\$15,000.00
	<i>Kosrae</i>	1.4.1 Further uptake of dry litter piggery technology in Kosrae	QRT1-2	\$52,400.00
		1.4.2 Procure supplies to conduct water quality monitoring and inform management planning of the Dry Litter Piggery Plan	QTR 2-4	\$1,750.00

<i>Yap</i>	1.4.1	Conduct assessment for degraded coastal areas (linked to Output 1.1)	QTR2	\$5,000.00
	1.4.2	Coordinate public awareness outreach activities for PA sites (linked to output 1.2)	QTR 4	\$5,000.00
	1.4.3a	Coordinate with partner agencies for technical support in education outreach program with schools and on environment day; to conduct at least 5 school visits to landfill site for monitoring purpose (linked to Output 1.2 activities)	QTR 4	\$4,000.00
	1.4.3b	Conduct outreach presentations in at least 5 schools and support and support 1 environment themed day	QTR 4	\$3,000.00
	1.4.3c:	Conduct at least 5 school and field visits to landfill sites (linked to output 1.2)	QTR 4	\$5,000.00
	1.4.4	Public Awareness Campaign (linked to output 1.2)	QTR 4	\$4,000.00
<b>Outcome 1 Total:</b>				<b>\$431,040</b>

<b>Management effectiveness enhanced within new and existing Pas on the High Islands of the FSM as part of the R2R approach (marine and terrestrial)</b>				
<i>Expected Results</i>		<i>Project Implementation Unit (PIU)</i>	<i>Timeframe</i>	<i>Budget</i>
<i>Outcome 2: Enable States to have a fully operational PA management decision support system, and verify coverage of statutory PAs on the High Islands</i>		• <i>Engagement of PIU staff for project coordination, oversight and management (PA component)</i>	<i>QTR 1-4</i>	<i>\$66,000.00</i>
		• <i>Staff participation in State and National consultations and site visits</i>	<i>QTR 1-4</i>	<i>\$26,125</i>
		• <i>Training opportunities for effective PA management</i>	<i>QTR1-4</i>	<i>\$25,000.00</i>
		• <i>Development of Communications and Capacity Strategy (PAs)</i>	<i>QTR 1-4</i>	<i>\$5,000.00</i>
<i>Outputs</i>	<i>State</i>	<i>Activities</i>	<i>Timeframe</i>	<i>Budget</i>
	<i>Pohnpei</i>	2.1.1 Work with State AG and Legal Counsel at Pohnpei State Legislative branch to identify gaps via three (3) consultation meetings	QTR 2	\$2,000.00
		2.1.2 Engage with PA Consultant (Legal Expert) to address gaps and submit recommendation to Pohnpei State Legislature/AG Office	QTR 4	\$3,000.00

2.1	Chuuk	2.1.1 State-wide stakeholder meeting on PAN legislation	QTR2	\$3,540.00
		2.1.2 Management planning training for local PA resource managers (linked to activity 1.2.2)	QTR3	\$1,530.00
		2.1.3 Facilitate participatory review of existing PA sites	QTR3	\$21,500.00
	Kosrae	2.1.1.a: Consult with FSM DR&D to complete/submit for enactment the FSM PA legislation	QTR1	-
2.1.1.b: Conduct consultation meetings on PAs review process with Kosrae State Legislature		QTR 1	\$500.00	
2.1.1.c: Enact Protected Areas (PA) Fund Bill to support funding of Conservation areas		QTR2-3	-	
2.1.1.d: Allocate 10,000USD to support start-up of PA Fund		QTR 2-4	\$10,000.00	
	Yap	NO ACTIVITIES		
2.2	Pohnpei	2.2.1 Facilitate participatory awareness on Watershed Forest Reserve in Kitti	QTR 1	\$1,000.00
		2.2.2 Delineate Watershed boundaries in Kitti	QTR 3	\$30,000.00
		2.2.3 Conduct Watershed monitoring (Baseline for 1st year of Project)	QTR 4	\$1,000.00
	Chuuk	2.2.1 Endorsement of 3 Municipal Ordinances	QRTR4	\$2,000.00
	Kosrae	2.2.1 Finalize and enact Walung and Tafunsak MPAs through the PA legislation	QTR1-2	\$500.00
	Yap	NO ACTIVITIES		
	Pohnpei	2.3.1 Conduct training on PAME Tool	QTR 2	\$3,000.00
		2.3.2 Assess management effectiveness using PAME tool with all PA listed sites	QTR 4	\$5,000.00
		2.3.3 Procure Vehicle for SLM & PA activities	QTR 1	\$26,250
		2.3.4 Procure 2 boats for PA Monitoring and Enforcement	QTR 1	\$40,000.00
		2.3.5 Procurement of Equipment for PA boundary demarcation (linked to activity 2.4.2)	QTR 2	\$2,000.00

2.3	<i>Chuuk</i>	2.3.1 Purchase of 1 boat for PA monitoring & Surveillance	QTR 4	\$26,000.00
		2.3.2 Vehicle purchase for SLM & PA Activities	QTR 1	\$23,000.00
		2.3.3 Conduct thematic working group meetings to discuss best practice of managing Pas	QTR 2	\$1,500.00
		2.3.4 Enforcement, compliance and monitoring training	QTR3	\$15,500.00
	<i>Kosrae</i>	2.3.1: Procure boat, engine and fuel to support PA activities	QTR1-2	\$16,000.00
		2.3.2: Procure vehicle and fuel to support PA and SLM activities	QTR1-3	\$22,500.00
		2.3.3: Conduct training for PA management authorities and stakeholders to use MPA Management Effectiveness (MPAME) Tools	QTR 1-3	\$2,000.00
		2.3.4: Conduct initial assessment of Walung MPA using the MPAME tool	QTR3	\$1,500.00
		2.3.5: Re-evaluate Management Effectiveness of the Utwe Biosphere Reserve (UBR) and Tafunsak MPA using the MPAME tool	QTR2-4	\$2,000.00
	<i>Yap</i>	2.3.1 Purchase vehicle for SLM and PA activities	QTR 2	\$23,000.00
<i>Pohnpei</i>	2.4.1 Survey assessment for all existing PA sites	QTR 1	\$500.00	
	2.4.2 MPA boundary demarcation of remaining existing PA sites (linked to activity 2.3.4)	QTR 3	\$500.00	
	2.4.3 Develop Management Plan for Palikir Pass Marine Protected Area	QTR 3	\$5,000.00	
	2.4.4 Conduct Cross-site Visit/Annual Learning Exchange for Pohnpei Local PAN	QTR 4	\$10,000.00	
<i>Chuuk</i>	2.4.1 Collect existing baseline data on 2 PA sites (linked to activity 1.1.4)	QTR3	\$2,500.00	
<i>Kosrae</i>	2.4.1a: Conduct consultations to support climate adaptation efforts in the Malem Watershed Area	QTR 2-4	\$2,000.00	
	2.4.1b: Procure supplies (Fuel) to develop Community based Ecosystem Approach to Fisheries Management (CEAFM) in the Walung community (linked to Output 1.2)	QTR 2	\$350.00	
	2.4.1c: Conduct consultation meetings for Walung Community Ecosystem based management approach (CEAFM)	QTR 1-4	\$1,600.00	

2.4	2.4.1d: Develop draft Coastal Fisheries management plan (CEAFM) for Walung MPA community (linked to Output 2.2)	QTR1-4	\$450.00	
	2.4.1e: Support ongoing Coastal Fisheries Management Campaign in the State of Kosrae (linked to Output 1.2)	QTR 1-4	\$2,000.00	
	2.4.1f: Procure promotional materials to support awareness of clean environment and resource management (linked to Output 1.2)	QTR 3	\$7,500.00	
	2.4.1g: Conduct MPA management planning activities in the Awane MPA community	QTR 1-4	\$2,000.00	
	2.4.3a: Conduct training on the MC Coral Monitoring Protocol and Incorporate the MC Coral Monitoring protocol into KIRMA monitoring program	QTR 3	\$3,000.00	
	2.4.3.b: Procure Marine Survey Equipment for coral monitoring program	QTR 3	\$6,000.00	
	2.4.3.c: Conduct Sea Cucumber Stock Assessment in PAs and Kosrae Coastal Waters	QTR 2-3	\$2,000.00	
	2.4.4a: Support the re-establishment of the Kosrae Conservation Enforcement Taskforce (KCET) and Finalize the SOP and Management Plan for KCET	QTR 2-4	\$1,000.00	
	2.4.4b: Procure badges for enforcement officers	QTR 2-4	\$2,000.00	
	2.4.4b: Support workshop for KCET on PAs and environmental laws and regulations	QTR 2- 4	\$650.00	
	2.4.5a: Conduct capacity assessment for Municipal Governments to support SLM activities	QTR 4	\$500.00	
	Yap	2.4.1a Conduct mapping of locations for FAD deployment	QTR 4	\$1,000.00
		2.4.1b Purchase of 3 FADs for deployment	QTR 4	\$7,500.00
		2.4.1c Subcontract 3 local consultants for FADs deployment	QTR 4	\$7,800.00
		2.4.1d Organize with partners to consult with communities on selected MPAs to be marked	QTR 4	\$15,040.00
		2.4.1e Support a feasibility study for aquaculture to rehabilitate degraded MPAs	QTR 4	\$15,000.00
		2.4.4a Facilitate 2 Community Consultations for Pas	QTR 1	\$2,000.00
		2.4.4b Hiring 2 PA Rangers (linked to Capacity development plan, Output 1.2)	QTR 1	\$24,000.00
		2.4.4c Field Monitoring for MPA & TPA (using the existing MC monitoring protocol)	QTR 2-3	\$1,000.00
2.4.4d Partner with RARE and other partners to develop communication strategies for natural	QTR 4	\$5,000.00		



	resource management conservation/protection (linked to Output 1.2)		
	2.4.5a Facilitate a participatory review of PA management with communities (linked to activity 2.4.4a)	QTR 1	\$2,000.00
	2.4.5b Conduct training/workshop for tool-kit facilitation using the existing toolkits from PIMPAC to build capacity of communities in Yap State (linked to Output 1.2)	QTR 1-2	\$11,500.00
	2.4.5c Assist 1 community in developing a new natural resource management plan or review and update an existing plan of a community	QTR 4	\$6,000.00
	2.4.5.d Collaborate effort with MRMD to work on MPA demarcation of new and existing MPAs (linked to output 2.4)	QTR 4	\$5,000.00
<b>Outcome 2 Total:</b>			<b>\$560,335.00</b>
<i>Outcome 3: Project Management</i>			
<ul style="list-style-type: none"> <li>• <i>Engagement of Financial Administrator</i></li> <li>• <i>Office supplies</i></li> <li>• <i>Direct Deposit Costs</i></li> </ul>		<i>QTR 1-4</i>	<i>\$32,265.00</i>
<b>Grand Total:</b>			<b>\$1,023,640</b>